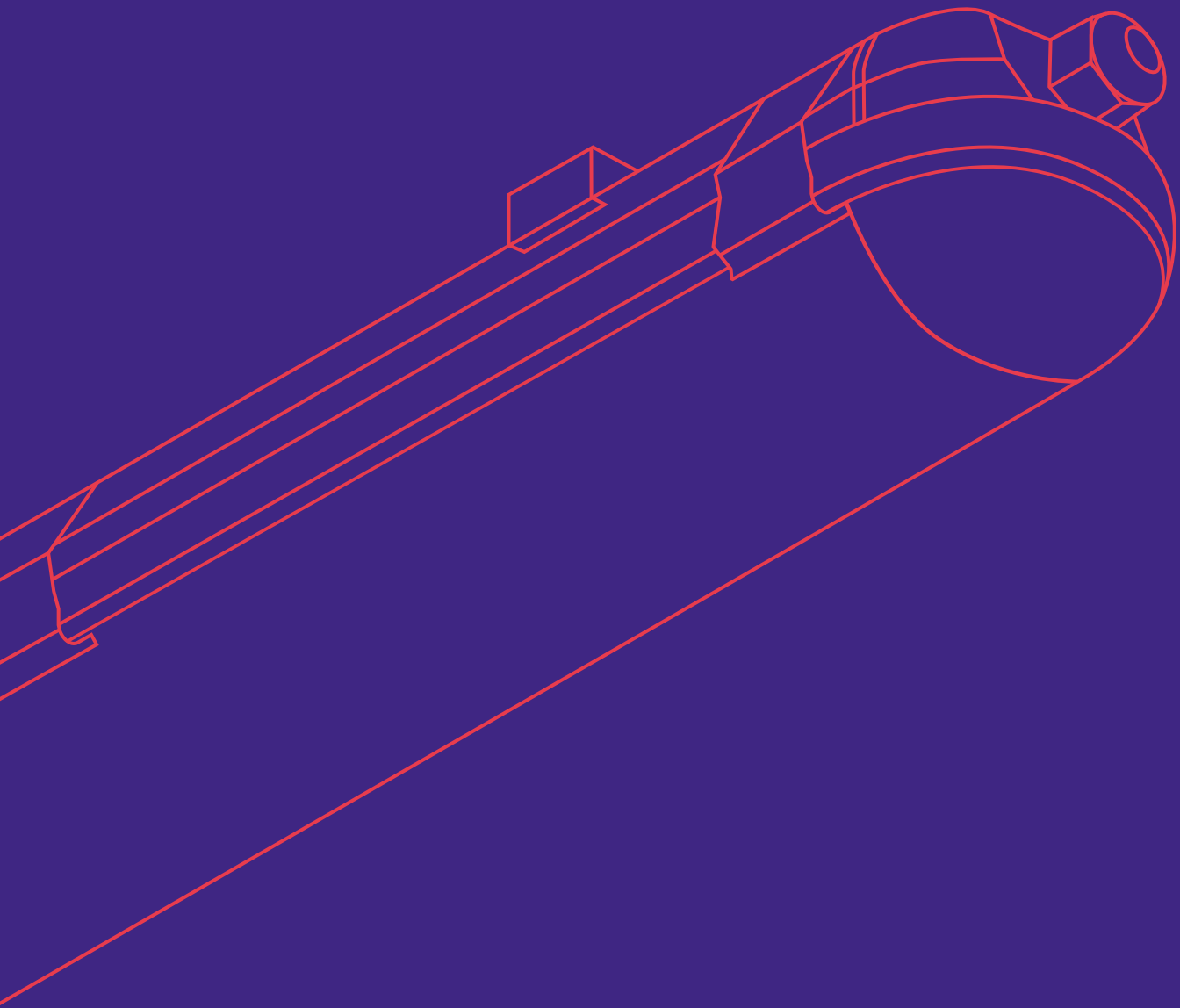


# BRUMBERG

Light.  
For generations.



## Light. Innovations 2022.

Product innovations and range extensions.

# BRUMBERG

## Product innovations and range extensions.

From the initial idea to implementation, we provide support for small and large lighting projects. With over **3,000 catalog products for indoor and outdoor lighting as well as custom-made products**, we implement sophisticated lighting concepts and ensure that buildings are illuminated in line with requirements. In this way, we connect people and spaces and create sustainable solutions. All in all: We create light. For generations.

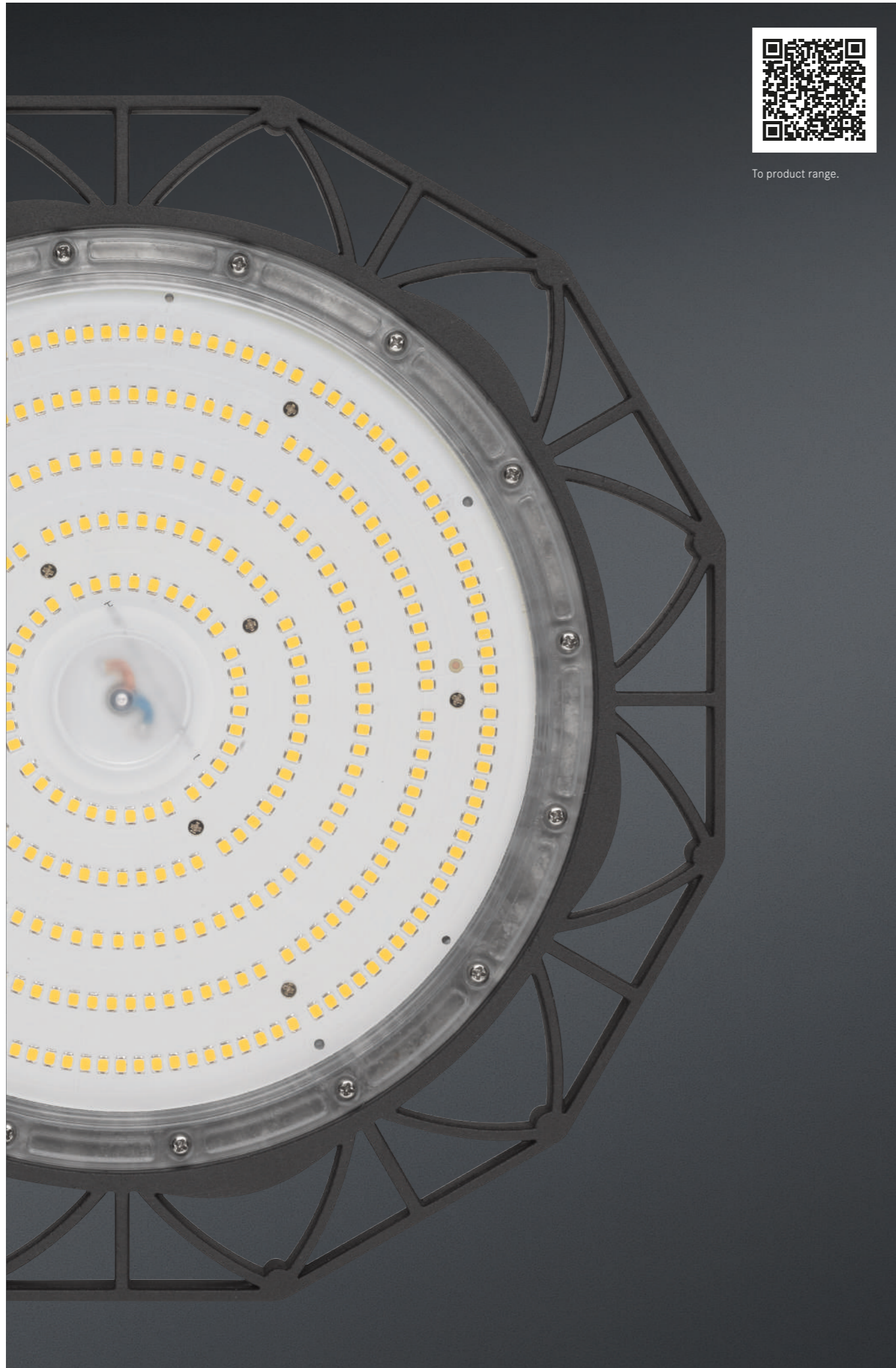
Starting with private apartments and single-family homes, to the **Hotel Seergarten** at the Sorpe Dam in Sundern, the **House of History** of Baden-Württemberg in Stuttgart and the **BORUSSIA-PARK** in Mönchengladbach, to the **vitra Design Museum** in Weil am Rhein, we win over our customers with product competence, lighting knowledge and an open, honest approach to cooperation. This **project diversity** makes us particularly proud as an ambitious, medium-sized family business from the Sauerland region. **In this context, it is above all our partner companies from the planning, trade and commerce sectors that make our entrepreneurial success possible.**

In this document, you will find our **Innovations 2022** compactly summarized. Get an overview, and if you would like to know more, you will find one or more links and **QR codes** on each product **that lead directly to more detailed information.**

We hope you enjoy reading this report,  
Johannes and Benedikt Brumberg



To product range.



## SOL Highbay LED downlights. Safe and effective illumination for industrial facilities.

The SOL Highbay LED downlights by Brumberg are especially suited for large industrial facilities, manufacturing sites, production halls, warehouses and workshops with their high luminous efficacy of 160 lumens per watt and power ratings of 80 watts, 120 watts and 160 watts ascending by size. Thanks to their built-in DALI-2 dimming, they can be adapted as per the room requirements. In addition, LED Highbays are more durable and energy-efficient than hall mirror luminaires. Furthermore, they do not contain toxic substances such as mercury. Thus, they ensure more safety at the workplace.

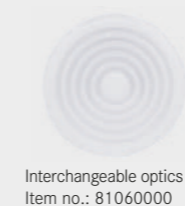
### Key features of the products:

- 5-year Brumberg light warranty.
- Long service life: L80B50 > 50,000 h at 25 °C.
- High luminous efficacy: 160 lm per watt.
- Dimmable as standard: DALI-2.
- Extensive accessories.
- Protection class: IP65.
- Low-maintenance lighting realization.
- Ambient temperature range: -25 °C to +45 °C.

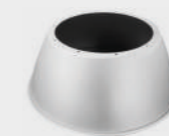


**SOL Highbay**  
Item no.: 78310084, 78311084, 78312084

### Available accessories for 78311084 and 78312084:



Interchangeable optics  
Item no.: 81060000



Aluminum luminaire shade  
Item no.: 81045250



PC luminaire shade  
Item no.: 81048000



Ceiling / wall bracket  
Item no.: 81049080



Reducer  
Item no.: 81050000



Chain suspension, 2m  
Item no.: 81052000



Y-cable connector, 5-pin  
Item no.: 81058000



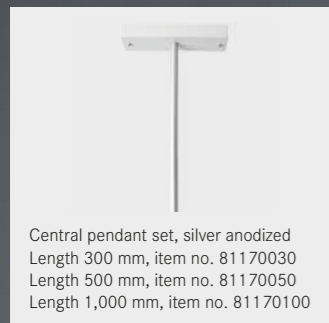
Cable connector, 3-pin  
Item no.: 81057000



To product range.



#### Exemplary accessories for RESCUE TWO 79230264:



Central pendant set, silver anodized  
Length 300 mm, item no. 81170030  
Length 500 mm, item no. 81170050  
Length 1,000 mm, item no. 81170100



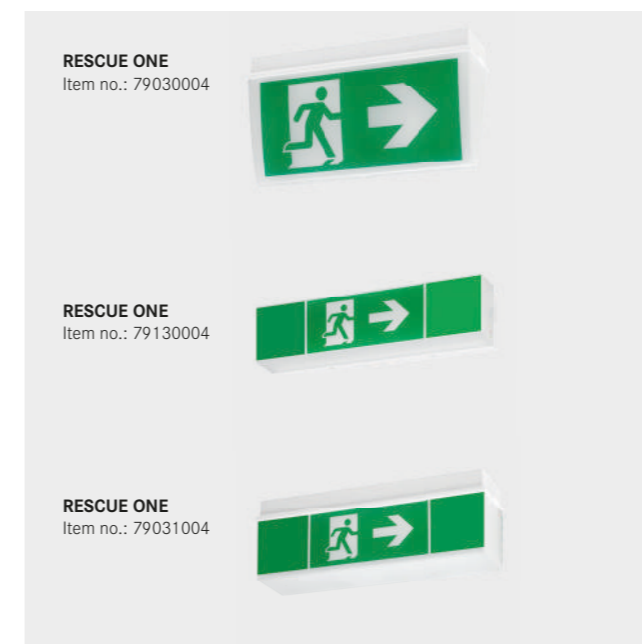
Ceiling installation set, white  
Item no.: 81171001

## RESCUE LED Escape sign luminaires. Find your way in an emergency.

They are mandatory in public buildings and can save lives in an emergency: Rescue sign luminaires provide the necessary orientation and mark emergency exits. Brumberg's luminaires stay on for three hours or eight hours (for lodging facilities) in emergency mode. With the pluggable pictograms, escape routes can be marked on one or two sides. Brumberg offers the luminaires as recessed or pendant luminaires for ceiling or wall mounting.

#### Key features of the products:

- Made in Germany, 5-year Brumberg light warranty.
- Long service and storage life due to LiFePO4 (lithium iron phosphate) batteries.
- One luminaire for all operating hours.
- 8 hrs. for accommodation facilities.
- 3 hrs. for all other areas.
- Self-adhesive pictogram set, quick replacement.
- Illumination of the rescue sign > 200 cd/m<sup>2</sup>.
- Technical design in accordance with EN 60598.2.22.
- Everything with AUTOTEST – function and test LEDs that are visible from the outside.



## HUMID ONE LED moisture-proof luminaires.

Durable, resistance-proof luminaires for special areas.



Exceptionally efficient for storage rooms, basements, garages or parking garages: Moisture-proof luminaires with LED illuminants. These not only provide the necessary brightness, but are also very durable with up to 50,000 hours of burning life. By means of the enclosed accessories, they are suitable not only as ceiling surface-mounted, but also as pendant or wall-mounted luminaires. The housing can remain at its installation position when the illuminant needs to be replaced. Thanks to the replaceable LED modules and drivers, the luminaires are ready for use again in just a few steps. Their PC plastic cover also makes them particularly robust and durable. As a result, Brumberg moisture-proof luminaires can be used in a temperature range between -20 degrees Celsius and +40 degrees Celsius. With their output of 18 to 51 watts, a color temperature of 4000 Kelvin and a color rendering index of CRI > 80, they safely and reliably illuminate areas with little or no daylight.



### Key features of the products:

- 5-year Brumberg light warranty.
- Long service life: L80B50 > 50,000 h at +25 °C.
- High efficiency: up to 135 lm/watt.
- Planning reliability thanks to the enclosed accessories for any type of installation (ceiling and wall-mounted and pendant)
- Cover and LED board form one unit for fast and easy installation.
- Robust, impact-resistant polycarbonate housing with IK08.
- All metal attachments are made of stainless steel (retaining clips, screws, etc.).
- Type converter from OSRAM.
- Fast installation: Through-wiring via cable sets 600/1,200/1,500 mm possible (can be ordered optionally).

1. **HUMID ONE** 580 mm, 18 W, Item no.: 78011114
2. **HUMID ONE** 1,190 mm, 18 W, Item no.: 78012114
3. **HUMID ONE** 1,190 mm, 28 W, Item no.: 78014114
4. **HUMID ONE** 1,490 mm, 35 W, Item no.: 78013114
5. **HUMID ONE** 1,490 mm, 51 W, Item no.: 78015114





To product range.

## Panel luminaires.

Illuminate workplaces efficiently.

Brumberg's ultra-flat panel luminaires (12 mm) provide glare-free ambient lighting at the workplace (UGR < 19) as recessed, surface-mounted or pendant luminaires - easy on the eyes and uplifting. With a uniform arrangement in the ceiling, spaces can also be flexibly redesigned.



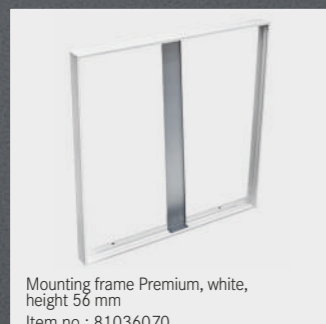
### Key features of the products:

- 5-year Brumberg light warranty.
- Long service life: L80B50 > 50,000 h at 25 °C.
- High efficiency: approx. 100 lumens per watt.
- Philips power supply, switchable and DALI dimmable.
- Power adjustable via multilumen dip switch.
- Stable design.
- Ultra-flat design (12 mm).
- Glare-free basic lighting at the workplace (UGR < 19).
- Easy on the eyes and motivating at CRI > 80.
- Color temperatures: 3000 K, 4000 K and TunableWhite.
- Protection class: IP40.
- Two different designs: 620 x 620 mm or 1,195 x 295 mm.
- Can be used as **recessed, surface-mounted or pendant luminaires**.
- Wide range of accessories from mounting frame to pendant set with steel cable suspension.
- No visible light points are detectable.

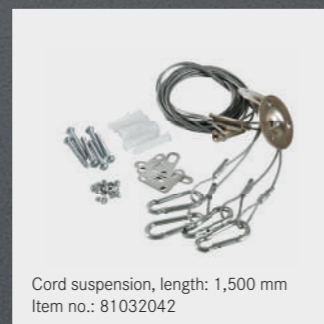
### Exemplary accessories for LED panel 620 x 620 mm:



Mounting frame Basic, white, height 73 mm  
Item no.: 81032040



Mounting frame Premium, white, height 56 mm  
Item no.: 81036070



Cord suspension, length: 1,500 mm  
Item no.: 81032042



To product range.



# IP66

IP66 designates the highest protection class against foreign bodies combined with protection against strong jets of water.

## MATRIX LED floodlights. Flexible use in outdoor areas.

With the MATRIX LED floodlights, we are expanding our range for outdoor lighting for private, public and industrial areas. The luminaires impress with their power of 20 watt, 50 watt and 100 watt and a luminous efficacy of 140 lumens per watt. They also withstand extreme conditions between -25° Celsius and +50° Celsius and are protected against the weather with their corrosion-resistant die-cast aluminum housing. In addition, the luminaires are multi-functional - for wall mounting and installation on poles (with accessories). This makes them particularly suitable for parking lot, pathway or building lighting.

### Key features of the products:

- 5-year Brumberg light warranty.
- High efficiency: more than 140 lumens per watt.
- Dust-proof and water-tight with IP66.
- Internal cooling pins for optimal heat dissipation and long product service life.
- Extreme temperature-resistant (-25 °C and +50 °C).
- Wall and pole mounting possible (via accessories).
- Powerful with 20 W, 50 W or 100 W.
- Corrosion-resistant die-cast aluminum housing.
- Symmetrical light distribution, beam angle 100°, others available on request.
- Asymmetric light distribution, beam angle 30 x 110°.
- Color temperatures: 3000 K, 4000 K.



1. **MATRIX LED floodlights Micro**, Item no.: 60801...
2. **MATRIX LED floodlights Mini**, Item no.: 60803...
3. **MATRIX LED floodlights Midi**, Item no.: 60805...

Sizes in mm | Order is subject to our General Terms and Conditions of Sale at [www.brumberg.com/de/agb](http://www.brumberg.com/de/agb).



To product range.



## SUNNY.

Setting accents indirectly.

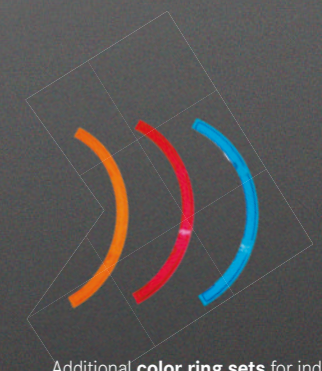
SUNNY wins you over with its "direct and indirect" virtues of simple bayonet mounting, flexible light color adjustment and with an additionally deliverable color ring for the indirect component, which can color-mark building areas. The color temperature can be adjusted on-site to 3000, 4000 or 6000 Kelvin. These lights are therefore suitable for numerous applications ranging from private homes to public buildings.

### Key features of the products:

- 5-year Brumberg light warranty.
- Standard indirect component in white, as accessories in amber, blue and red.
- Easy installation thanks to a bayonet mounting and retaining cable.
- Luminaire are removable thanks to a separate mounting plate.
- Two sizes: 330 mm or 440 mm.
- Three on-site adjustable light colors: 3000 K, 4000 K and 6000 K.
- Also available as pendant version (accessories: pendant set).
- Light color adjustable on the switch via bottom-switch function.
- Dimmable via phase section.



**Installation:** Fast, tool-free mounting thanks to a separate mounting plate and modular system design. The luminaire housing is screwed on without tools by means of bayonet fixing.



Additional **color ring sets** for indirect ambient lighting and additional **pendant set**.







Chromium

Black

Matt nickel

## MOON.

Flexible all-rounder for renovation and conversion.

The luminaires MOON comes in three sizes and offer three wattages with different lumen packages depending on the size. In addition, the color temperature can be adjusted on-site to 3000, 4000 or 6000 Kelvin via a DIP switch. The variable borehole makes for easy installation. MOON is suitable for screw and spring mounting as well as for surface and flush mounting. This product line provides optimum illumination for floors, passageways or waiting areas. Luminaires can be installed very easily thanks to the integrated retaining cable. Luminaires can be installed by one person, as the luminaire is hooked onto the spring using the retaining cable during the installation.

Simply well made. Flexible hole size for ceiling mounting. Anyone who renovates buildings is often faced with the challenge of integrating new luminaires into existing ceiling cut-outs. The flexibly adjustable mounting spring of the MOON helps eliminate possible "frown lines". For example, it can be adjusted to 65 to 155 millimeters, 210 millimeters or even 310 millimeters for a round cut-out. Luminaires from the MOON series can thus be easily inserted into an existing borehole.

### Key features of the products:

- 5-year Brumberg light warranty.
- Suitable for both screw mounting (surface mounting) and spring mounting (recessed mounting).
- Can be used in existing borehole from 65 mm to max. 310 mm.
- Three sizes: 170 mm (12 W), 225 mm (18 W) or 330 mm (24 W).
- On-site adjustable color temperature: 3000 K, 4000 K or 6000 K.
- Interchangeable magnetic front ring in chrome, black and matt nickel (as accessories).
- Delivery: including converter for connection with 230 V mains voltage, dimmable via phase section.



3000 K



4000 K



6000 K



For surface and recessed mounting.



To Surface-mounted  
Luminaires product range.



To Pendant  
Luminaires product range.

## BIRO CIRCLE ring luminaires.

Light channel designed to catch the eye.

The BIRO CIRCLE ring luminaire integrates harmoniously into any architecture thanks to its round, purist design. Due to the wide range of luminaire sizes up to special size orders in combination with the selectable surfaces, the ring luminaires can be optimally coordinated to suit the space. Whether as a ceiling surface-mounted or pendant luminaire – BIRO CIRCLE is a visual highlight in any room.

### Key features of the products:

- 5-year Brumberg light warranty.
- Available as **surface-mounted and pendant luminaires** (direct & direct/indirect).
- Three surfaces: textured white, textured black and textured silver.
- Six diameters: 450 mm, 600 mm, 750 mm, 1,000 mm, 1,200 mm and 1,500 mm.  
For the pendant version, special sizes up to 6,000 mm diameter are available on request.
- Two color temperatures: 3000 K and 4000 K.
- Two control modes: switchable and DALI.
- Delivery includes single cable suspension and decentralized ceiling canopy.
- Central ceiling canopy available on request.
- Transparent feed line in 3- or 5-pin model (DALI).



BIRO CIRCLE



Decentralized  
ceiling canopy



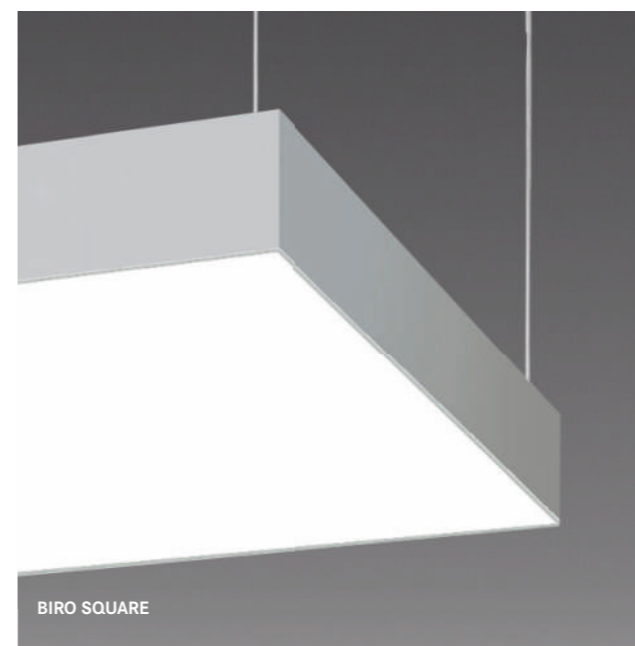
## BIRO CIRCLE and SQUARE surface luminaires.

Uniform illumination of large rooms.

The BIRO CIRCLE and BIRO SQUARE surface luminaires are characterized by a high light output of up to 29,760 lm with a diameter of 1,500 mm and illuminate the room over a large area. Due to the simple design, the lights fit perfectly in modern interiors. The luminaires are available as pendant versions or ceiling surface-mounted luminaires in various sizes and colors, leaving plenty of scope for design in the space.

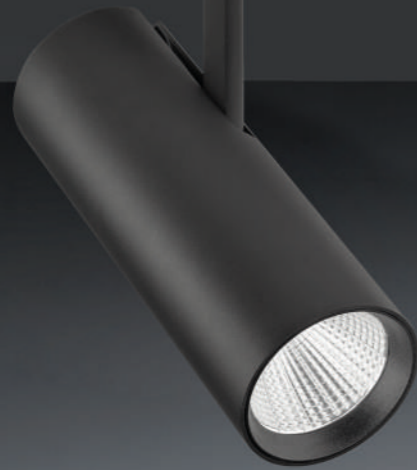
### Key features of the products

- 5-year Brumberg light warranty.
- Available as **surface-mounted and pendant luminaires**.
- Three surfaces: textured white, textured black and textured silver.
- Two color temperatures: 3000 K and 4000 K.
- Two control modes: switchable and DALI.
- Delivery includes single cable suspension and decentralized ceiling canopy.
- Central ceiling canopy available on request.
- Transparent feed line in 3- or 5-pin model (DALI).





To product range.



## LED track spotlight MINI & MAXI.

Perfectly staged retail areas.

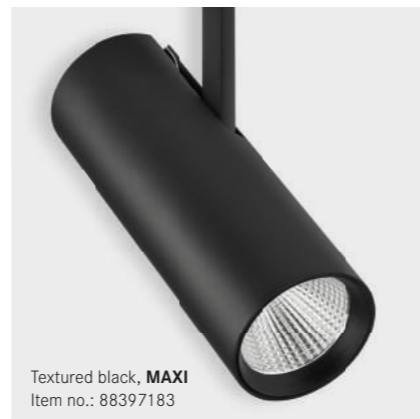
Compact, unobtrusive, harmonizes with many architectural space concepts. Accentuated light thanks to a beam angle of 36° (MINI) or 30° (MAXI). Ideal for drawing attention to objects and spaces in an eye-catching way.

### Key features of the products

- 5-year Brumberg light warranty.
- See products in their true color in the right light.
- Spotlights direct the eye and put products in focus.
- Two sizes: MINI: 200 mm, MAXI: 235 mm.
- Two beam angles each: MINI: 36° and 24°, MAXI: 40°, 30° and 20°.
- True color with a color rendering index of CRI > 90.
- Individually alignable in textured white, textured silver and textured black.
- Three color temperatures: 3000 K, 3500 K and 4000 K.
- Additional accessories: Glare shield, screen and honeycomb grid.
- DALI design available on request.



Textured white, **MINI**  
Item no.: 88393173



Textured black, **MAXI**  
Item no.: 88397183



## 5-year light warranty

The BRUMBERG promise of quality.

### 5-year light warranty

Brumberg luminaires meet the highest standards of material and workmanship. We guarantee this with the Brumberg quality promise. The light guarantee is an upgrade of the legal, 2-year warranty period.

Unrestricted trust in our

luminaire systems and operating devices is the foundation for the guarantee for lighting quality. We guarantee the flawless quality and function of Brumberg products for a period of 5 years within the scope of the warranty conditions whenever you purchase a Brumberg product. The light guarantee is completely free of charge and applies to our trade partners.

The 5-year warranty is valid only after registration on the website.

[www.brumberg.com/en/5-year-light-warranty](http://www.brumberg.com/en/5-year-light-warranty)



© Copyright 2021

BRUMBERG Leuchten GmbH & Co. KG, Sundern (Germany)

All rights reserved. Reprints, reproductions and translations are only allowed with our written permission.

The BRUMBERG Leuchten GmbH & Co. KG is constantly working on the further development of all products.

Due to product changes and further developments, technical changes are possible at any time. Therefore, no claims can be derived from the information, illustrations, descriptions and dimensions in this price list.

No guarantee for misprints and errors.

© Photos: Brumberg | Henrik Schipper | Boris Golz | Dirk Wilhelmy | Constatin Meyer | Niklas Thiemann | Tobias Hein | Christian Verheyen | Boris Storz | Uli Beuttenmüller | Adobe Stock | shutterstock

Printed in Germany.

# BRUMBERG

BRUMBERG Leuchten GmbH & Co. KG  
Hellefelder Str. 63 | 59846 Sundern (Germany)  
Phone: +49 (0) 29 34 / 96 11 0 | Fax: +49 (0) 29 34 / 96 11 96  
info@brumberg.com | www.brumberg.com

**PREMIUM MARKEN**  
Partner 

BRUMBERG products can be obtained exclusively from your local electrician. According to the German standard for electrical equipment (DIN VDE 0100), only a qualified electrician may install and approve electrical equipment.

