

EO

P L A Y

# ZOO COLLECTION TOUCAN WHALE PANDA

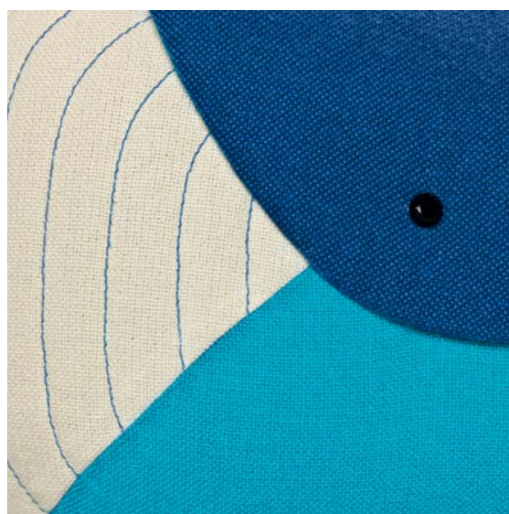
Design by Ionna Vautrin

THE ZOO COLLECTION is a collection of bright and colorful cuddle toys that appeal to both children and adults. The Zoo includes a toucan, a panda bear and a whale. The Zoo Collection is made in a big oversized version and a small "teddy bear" version. Made in the famous Hallingdal 65 fabric from Kvadrat.



## DESIGN BY IONNA VAUTRIN

Having worked for a host of international brands such as Camper, George J Snowden and Ronan & Erwan Bouroullec, the French designer Ionna Vautrin opened her own studio in Paris in 2011. Since then, she infuses her signature cheerful spirit into a composition of organic and geometric shapes. Her work is a charming weave of industry and poetry.



Hallingdal 65 fabric, from Kvadrat.

### PANDA

#### LARGE

Dimensions: L45 x W33 x H80 cm  
 Package Size: 48 x 35 x 82 cm  
 Material: Hallingdal 65 textile from Kvadrat, 80% wool, 20% viscose. Inside is one piece foam.  
 Weight: 6 kg  
 Colli: 1 pc  
 Colli Weight: 7 kg

#### MINI

Dimensions: L20 x W14 x H32 cm  
 Package Size: 31 x 15 x 36 cm  
 Material: Hallingdal 65 textile from Kvadrat, 80% wool, 20% viscose. Inside is one piece foam.  
 Weight: 1 kg  
 Colli: 4 pcs  
 Colli Size: 60 x 36 x 31 cm  
 Colli Weight: 4 kg



### TOUCAN

#### LARGE

Dimensions: L72 x W36 x H81 cm  
 Package Size: 73 x 38 x 84 cm  
 Material: Hallingdal 65 textile from Kvadrat, 80% wool, 20% viscose. Inside is one piece foam.  
 Weight: 6 kg  
 Colli: 1 pc  
 Colli Weight: 7 kg

#### MINI

Dimensions: L30 x W14 x H33 cm  
 Package Size: 31 x 15 x 36 cm  
 Material: Hallingdal 65 textile from Kvadrat, 80% wool, 20% viscose. Inside is one piece foam.  
 Weight: 1 kg  
 Colli: 4 pcs  
 Colli Size: 60 x 36 x 31 cm  
 Colli Weight: 4 kg



### WHALE

#### LARGE

Dimensions: L108 x W56 x H33 cm  
 Package Size: 48 x 35 x 82 cm  
 Material: Hallingdal 65 textile from Kvadrat, 80% wool, 20% viscose. Inside is one piece foam.  
 Weight: 6 kg  
 Colli: 1 pc  
 Colli Weight: 7 kg

#### MINI

Dimensions: L46 x W25 x H14 cm  
 Package Size: 31 x 15 x 36 cm  
 Material: Hallingdal 65 textile from Kvadrat, 80% wool, 20% viscose. Inside is one piece foam.  
 Weight: 1 kg  
 Colli: 4 pcs  
 Colli Size: 60 x 36 x 31 cm  
 Colli Weight: 4 kg



# BAMBI SHEEP COW CHAIR

Design by Takeshi Sawada

BAMBI, SHEEP & COW is as much a friendly companion as it is a piece of children's furniture. It is bold and a playful object for any child or parent to enjoy.



## DESIGN BY TAKESHI SAWADA

The artwork by the Tokyo-based designer Takeshi Sawada is highly iconic with his straightforward expression of playfulness, emotion and energy. Originally an apparel designer, his aesthetic inspiration has highly influenced his furniture design principle.



### BAMBI CHAIR

Dimensions: L26 x W24 x H39 / SH33 cm  
Package Size: 34 x 32 x 44 cm  
Material: Fine solid Oak and Walnut, seat in foam and faux fur.  
Weight: 3 kg  
Colli: 4 pc  
Colli Size: 81 x 60 x 35 cm  
Colli Weight: 14 kg



### SHEEP CHAIR

Dimensions: L26 x W24 x H39 / SH33 cm  
Package Size: 34 x 32 x 44 cm  
Material: Fine solid European Beech and Oak with a matte laquer finish, seat in foam and faux fur.  
Weight: 3 kg  
Colli: 4 pc  
Colli Size: 81 x 60 x 35 cm  
Colli Weight: 14 kg



### COW CHAIR

Dimensions: L26 x W24 x H39 / SH33 cm  
Package Size: 34 x 32 x 44 cm  
Material: Fine solid European smoked Oak and Walnut, seat in foam and faux fur.  
Weight: 3 kg  
Colli: 4 pc  
Colli Size: 81 x 60 x 35 cm  
Colli Weight: 14 kg



# ELEPHANT CHAIR & TABLE

THE ELEPHANT CHAIR & TABLE have a friendly and welcoming appearance, that will seduce the youngest and stimulate storytelling and adventure. The sophisticated lines will appeal to the parents and serve as a perfect blend of form and function. The Chair & Table are made from fine European Beech in a matte lacquer finish.



## ELEPHANT CHAIR

Dimensions: L36 x W44 x H58 cm / SH32 cm  
Package Size: 59 x 46 x 42 cm  
Material: Fine European Beech with a matte lacquer finish.  
Weight: 5.5 kg  
Max Weight: 60 kg  
Age: 3 - 11 years  
Colli: 2 pc  
Colli Size: 86x 60 x 51 cm  
Colli Weight: 13 kg



## ELEPHANT TABLE

Dimensions: L75 x W55 x H48 cm  
Package Size: 107 x 59 x 7 cm  
Material: Fine European Beech with a matte lacquer finish.  
Weight: 9 kg  
Max Weight: 60 kg  
Age: 3 - 11 years  
Colli: 1 pc  
Colli Weight: 10 kg



## DESIGN BY MARC VENOT

Marc is an awarded industrial designer from ENSCI - Les Ateliers, Paris with a mathematics and physics background. Before he founded his studio in 2011, he had a rich work experience for luxury brands such as Hermes, Cartier and others. His unique background has helped him step into many key furniture and product design project collaborations with fx. Thonet, Lexon, Normann Copenhagen and EO.



# BALLOON MIRROR

BALLOON MIRROR is a playful and elegant design, that is available in two sizes. The small knot detail is made of European Oak with a fine leather strap.

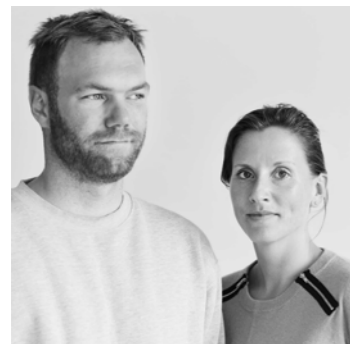


## SMALL

Dimensions: L36 x W28 x D1 cm  
 Package Size: 60 x 40 x 2.5 cm  
 Material: Glass, Oak and aniline leather string.  
 Weight: 1.5 kg  
 Colli: 4 pcs  
 Colli Size: 63 x 43 x 13 cm  
 Colli Weight: 7 kg

## LARGE

Dimensions: L46 x W36 x D1 cm  
 Package Size: 60 x 40 x 2.5 cm  
 Material: Glass, Oak and aniline leather string.  
 Weight: 2 kg  
 Colli: 4 pcs  
 Colli Size: 63 x 43 x 13 cm  
 Colli Weight: 9 kg



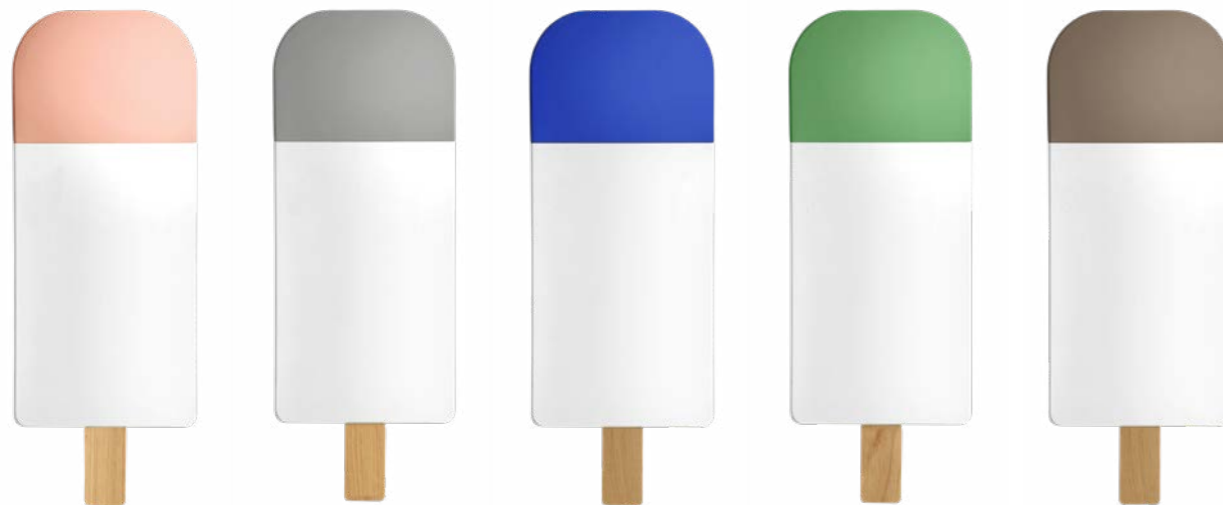
## DESIGN BY NICOLE & TOR VITNER SERVÉ

Tor & Nicole are the directors and owners of EO. Their common passion for design and production has created an impeccable bonding for the A-Team. Graduated from Royal Danish Academy of Fine Arts, Nicole has found excitements in versatile design worlds including landscape and stage design; whereas Tor is profoundly rooted in Danish design industry through years of dedication in Bo-Tikken, Normann Copenhagen, Luceplan Scandinavia and OK Design (as a partner). Tor, together with Nicole, proudly established EO in 2013.



# ICE CREAM MIRROR

ICE CREAM MIRROR is a decorative piece that is inspired by one of our favourite food. The slim dimensions make it easy to place in almost any room to add some personality and humour to your home.



Warm Rose

Smoked Grey

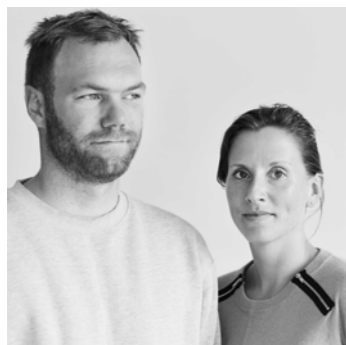
Ocean Blue

Exotic Green

Hazel Brown

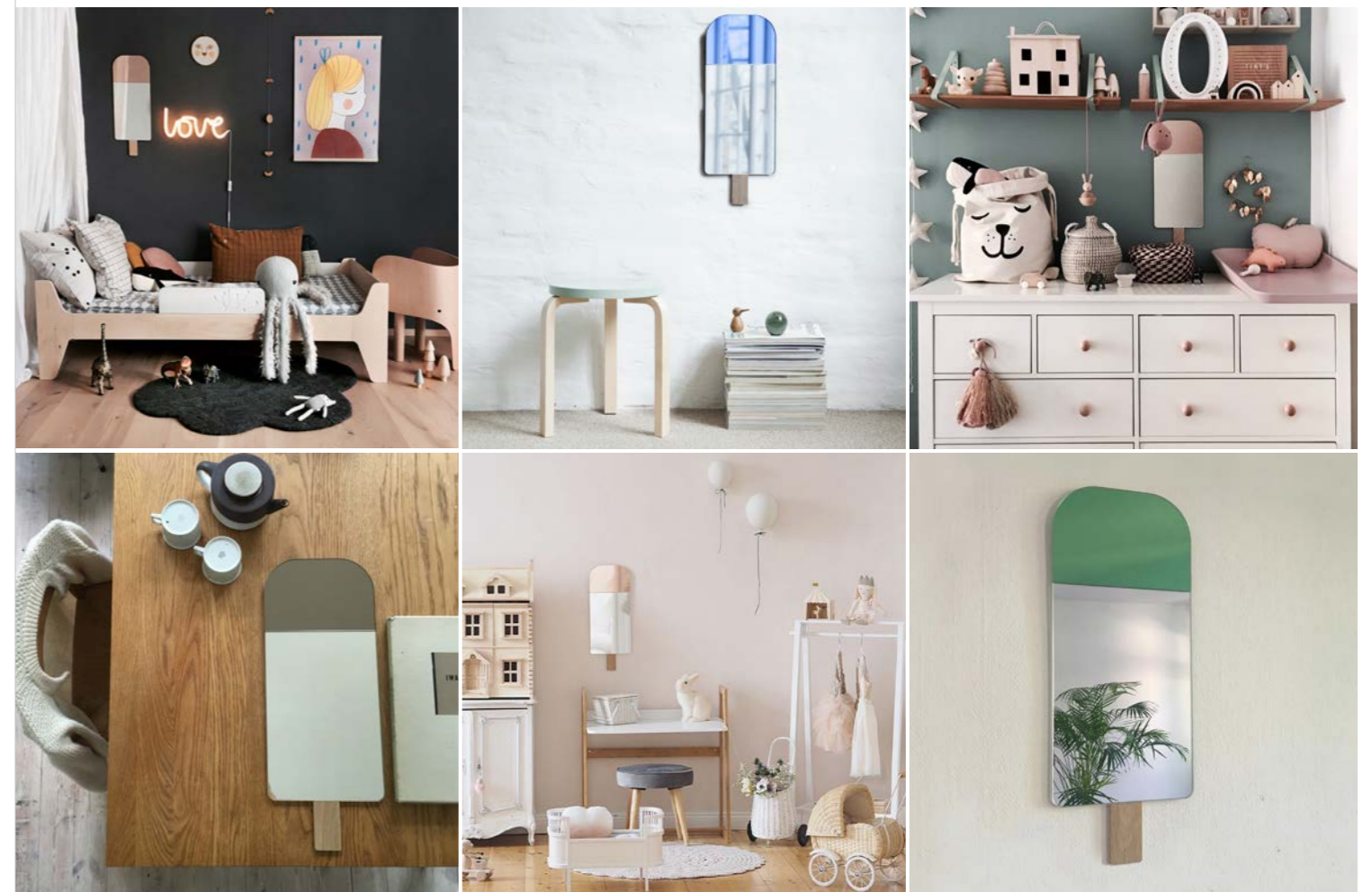
Dimensions: L57 x W22 x D1 cm  
 Package Size: 60 x 40 x 2.5 cm  
 Material: Glass, colored glass, Oak.  
 Variants: Warm Rose, Smoked Grey, Ocean Blue, Exotic Green and Hazel Brown.

Weight: 2 kg  
 Colli: 4 pcs (per colour)  
 Colli Size: 63 x 43 x 13 cm  
 Colli Weight: 8 kg



## DESIGN BY NICOLE & TOR VITNER SERVÉ

Tor & Nicole are the directors and owners of EO. Their common passion for design and production has created an impeccable bonding for the A-Team. Graduated from Royal Danish Academy of Fine Arts, Nicole has found excitements in versatile design worlds including landscape and stage design; whereas Tor is profoundly rooted in Danish design industry through years of dedication in Bo-Tikken, Normann Copenhagen, Luceplan Scandinavia and OK Design (as a partner). Tor, together with Nicole, proudly established EO in 2013.





# PEACOCK

PEACOCK pencil holder is a humorous, elegant and decorative object for children from ages of 3-100.



Dimensions: Incl. pencils L15 x W36 x H21 cm  
Without pencils L15 x W7 x H12 cm

Package Size: 18 x 10 x 13 cm

Material: Fine European Beech wood, oil treated,  
24 colored pencils included.

Weight: 500 g

Colli: 8 pc

Colli Size: 41 x 38 x 16 cm

Colli Weight: 4 kg



## DESIGN BY TAKESHI SAWADA

The artwork by the Tokyo-based designer Takeshi Sawada is highly iconic with his straightforward expression playfulness, emotion and energy. Originally an apparel designer, his aesthetic inspiration has highly influenced his furniture design principle.



# ONoff HANGER

ONoff are simple and modern hangers that combine form and simplicity. They are designed by Bicolter Studio who were inspired by the form of hidden electrical tubes and have interpreted these elements into everyday objects.

Dimensions: Ø3.5 x H3.5 cm  
Weight: 100 g  
Package Size: (Set of 2) 13 x 8 x 4 cm  
Material: Fine solid European Beech, powder coated.  
Colli: 24 sets of 2  
Colli Size: 32 x 29 x 15 cm  
Colli Weight: 2.5 kg

Variants: Black, White, Grey, Blue, Mint, Peach.  
Max Weight: 8 kg, Depending on the mounting surface these numbers can vary, take into account the weight of the product plus anything that will be placed on it when considering the strenght of the mounting surface.



## DESIGN BY BICOLTER

Bicolter is a Spanish design studio by Olivia Salcedo and Saulo Santana. Bicolter constantly performs experimentation and debate between intangible and tangible language, in order to create new appreciations for objects. Their aim for the product is to explore the balance between conceptual and technical development.



# PANDA CARPET



PANDA CARPET is a friendly and alluring interpretation of the Asian icon. Perfect in any room to add humour and warmth to your home.

Dimensions: L100 x W70 x H2 cm  
 Package Size: 17 x 17 x 71 cm  
 Material: Handmade in 100% wool.  
 Carefully woven in the precise colors and details.  
 Weight: 3.5 kg  
 Colli: 5 pc  
 Colli Size: 91 x 19 x 73 cm  
 Colli Weight: 19 kg



## DESIGN BY TWICE STUDIO

Twice is an art direction and graphic design studio based in Paris, founded by Fanny Le Bras and Clémentine Berry. Their unique hybrid of music, fashion and art has reflected on their absolutely charming work. The bold use of colours and graphics have set an exclusively playful tone in the design with a great vibe. Twice has an impressive work experience for fashion and cultural clients such as Baleapop festival, Dior, Lea Peckre and Graphic Design Festival Paris.



Photo by panry



Photo by panry



Photo by prchtg

# ZEBRA CARPET



ZEBRA CARPET is a modern interpretation of the distinctive African animal with its unique black and white stripes. Its graphic appearance makes it perfect in any room to add humour and warmth to your home.

Dimensions: L100 x W70 x H2 cm  
Package Size: 17 x 17 x 71 cm  
Material: Handmade in 100% wool.  
Carefully woven in the precise colors and details.  
Weight: 3.5 kg  
Colli: 5 pc  
Colli Size: 91 x 19 x 73 cm  
Colli Weight: 19 kg

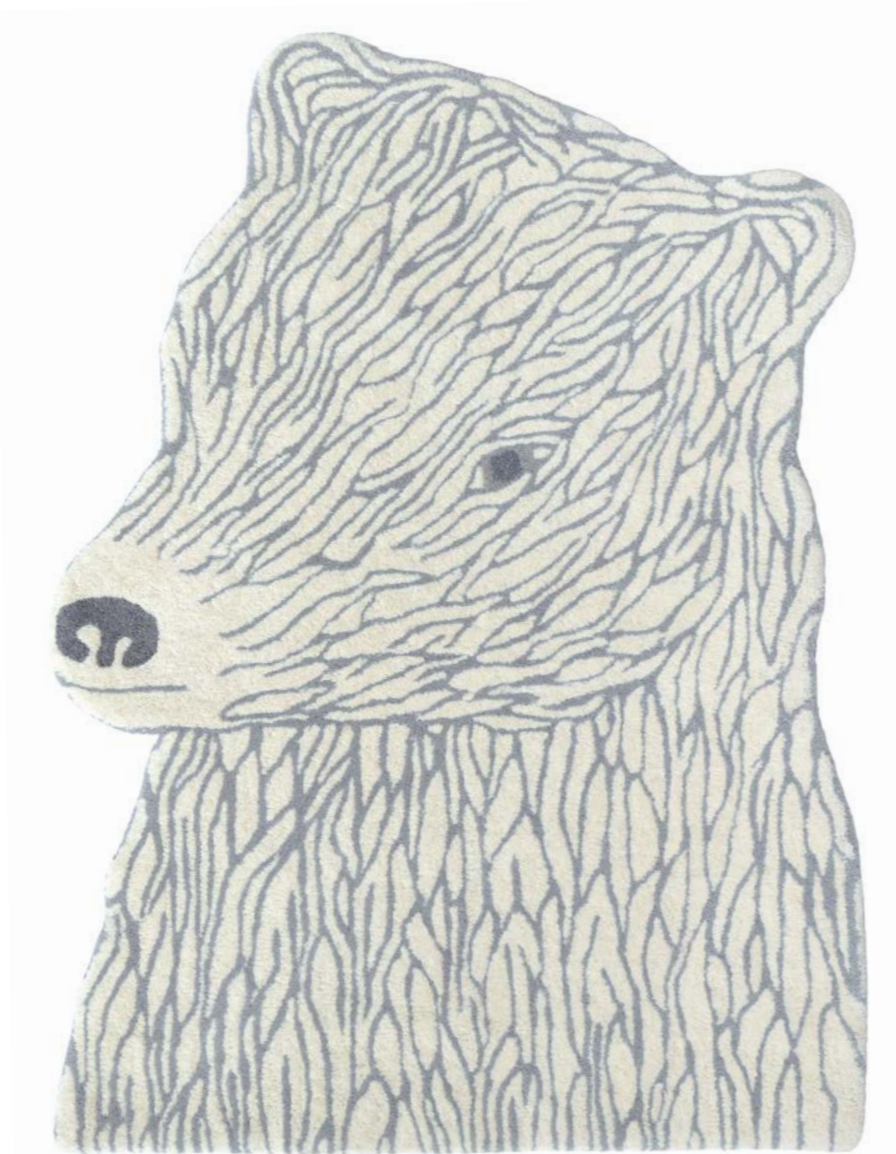


## DESIGN BY LES GRAPHIQUANTS

Founded in 2008, Les Graphiquants is a Parisian design agency specializing in graphic design and typography. The awarded team converts the essence of an idea into a series of abstracts, graphics and colours, with a unique dose of peculiarity. The construction has always led to a delicately brutal process, yet it creates an imaginative outcome filled with fantasy and intelligence.



# BEAR CARPET



*New item* Available from  
January 2019

BEAR CARPET, classic and graceful in the style with a soft and light touch, this graphical piece will fit in any room.

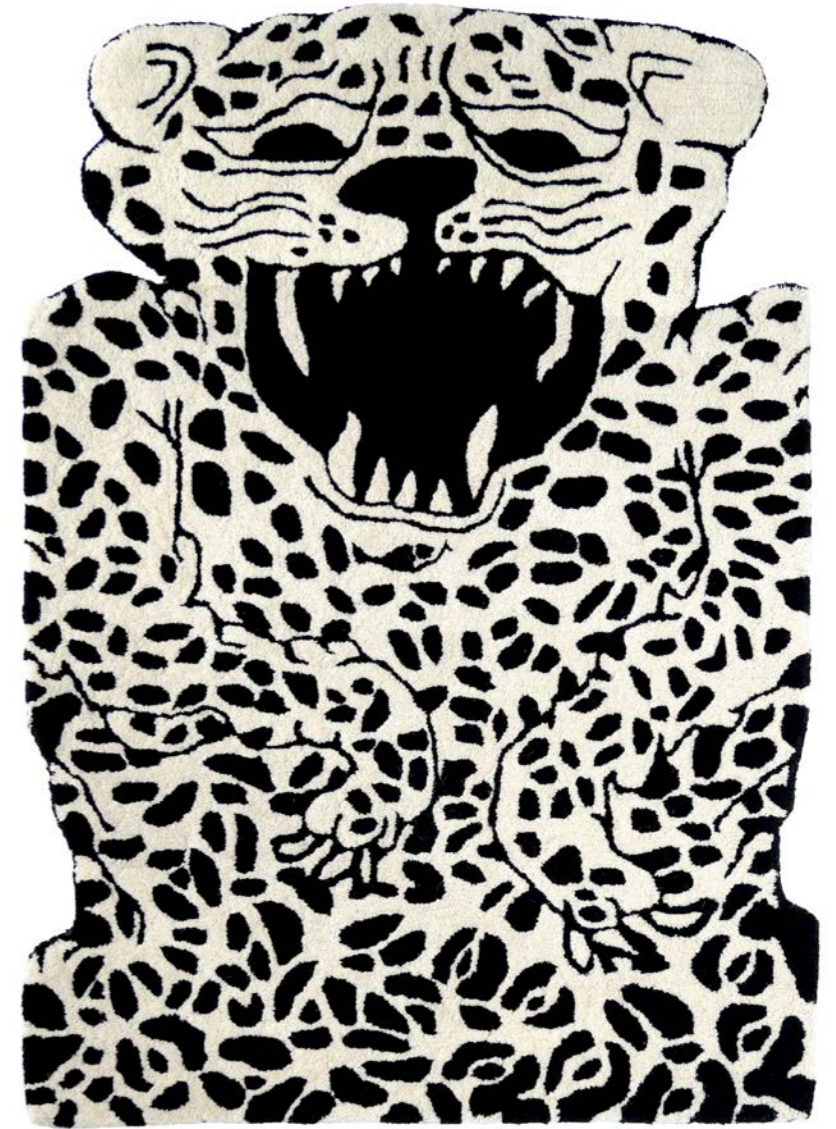
Dimensions: L100 x W70 x H2 cm  
Package Size: 17 x 17 x 71 cm  
Material: Handmade in 100% wool.  
Carefully woven in the precise colors and details.  
Weight: 3.5 kg  
Colli: 5 pc  
Colli Size: 91 x 19 x 73 cm  
Colli Weight: 19 kg



## DESIGN BY JOACHIM JIROU-NAJOU

Joachim Jirou-Najou is a French designer born in 1980 in Nancy (France). He lives and works in Paris. After developing projects for various clients, as well as collaborations with other designers, Joachim Jirou-Najou decided to launch his own studio in 2013. A graduate of the ESAD of Reims in 2002 and the Ecole Nationale Supérieure des Arts Décoratifs of Paris in 2004 he designs furniture and objects, in limited editions or industrial serial production.

# LEOPARD CARPET



*New item* Available from  
January 2019

LEOPARD CARPET, warm, friendly and vibrant – this African fast runner will add humor and fashion into any room.

Dimensions: L100 x W70 x H2 cm  
Package Size: 17 x 17 x 71 cm  
Material: Handmade in 100% wool.  
Carefully woven in the precise colors and details.  
Weight: 3.5 kg  
Colli: 5 pc  
Colli Size: 91 x 19 x 73 cm  
Colli Weight: 19 kg



## DESIGN BY HELKARAVA

Made in the south of France, Helkarava is living in Paris where he is watching the humanity with his glass eyes. Illustrator and comics drawer, he is sketching during the full moon, writing during the full sun and cooking tchoutchouka when the clouds are going down on the life.

New item Available from  
January 2019



## 2-6-10 CLOCK

2-6-10 is a modern designed table clock that changes its mood every minute of the day.



Dimensions: W10x H10 x D5 cm  
Material: ABS plastic, rubber finish.  
Variants: Mint, White, Black, Grey, Blue, Pink

### DESIGN BY AC/AL

AC/AL is a design studio founded in 2013 by Amandine Chhor and Aïssa Logerot. Both graduates from ENSCI in Paris, they first made their own experience by working in design agencies and international companies. The studio creates objects with the aim to reach a perfect balance between function, form and techniques of production, depending on the companies' know-how and constraints. Passionate for materials, crafts and industrial manufacturing processes, they draw products and furniture that valorize usefulness and the rigor of simplicity. Their precise, elegant and clean lines give their designs their identity.



New item Available from  
January 2019



## ANIMAL MUG

The Animal Mug, for kids, is a bright, clear and modern range of the five animals: Hippo, Puma, Elephant, Monkey and Zebra.

Hippo



Monkey



Puma



Zebra



Elephant



Dimensions: Ø7.5 x H7 cm  
Package Size: 8 x 10.5 x 8.5 cm  
Material: Fine Bone China  
Variants: Hippo, Puma, Elephant, Monkey, Zebra.



## DESIGN BY MARC VENOT

Marc is an awarded industrial designer from ENSCI - Les Ateliers, Paris with a mathematics and physics background. Before he founded his studio in 2011, he had a rich work experience for luxury brands such as Hermes, Cartier and others. His unique background has helped him step into many key furniture and product design project collaborations with fx. Thonet, Lexon, Normann Copenhagen and EO.

*New item* Available from  
January 2019



## CARROT CAR

Carrot car- a playfull wooden racing car.



Dimensions: L13.6 x W4.8 x H3.6 cm  
Material: Fine solid European Beech, powder coated.



## DESIGN BY JOHANNES KLEIN

German born designer Johannes Klein is living and working in Berlin and Milano, Italy. After spending the first couple of years as a furniture maker he transferred to Milan in 2002, where he collaborated with different design studios. He is a founding partner of Opendot Fablab where he enjoys to explore new technologies and co-creation working in the fields of industrial architecture, interior architecture and lighting technology.

## ABOUT

EO is a Danish contemporary design brand.

Our ambition is to create original, iconic, timeless pieces.

We believe in harmony and free spirit thinking.

We want to create vibrant, authentic, high quality products that challenge conventional thinking. Each product is meticulously created with highly skilled craftsmanship. We collaborate with innovative and independent designers from around the world and we believe in strong relationships with all our partners whether they are architects, employees, designers, independent retailers or the end users of our products.

EO was established in Copenhagen, Denmark in 2013 by Nicole & Tor Vitner Servé and is now available via independent retailers in 40 countries and counting.



PASSION FOR  
QUALITY & CREATIVITY



[www.eo.dk](http://www.eo.dk) [info@eo.dk](mailto:info@eo.dk) +45 31 55 88 85  
Showroom & Office  
Carl Jacobsens Vej 16, 2500 Valby, Copenhagen, Denmark  
Instagram [@eo.dk](#) [#eodk](#)