

MYO  
S P A I N

MYO SPAIN



MYO  
S P A I N

[www.myo-spain.com](http://www.myo-spain.com)  
[info@myo-spain.com](mailto:info@myo-spain.com)

MYO comes from a history of lighting with more than a century of experience. MYO was born with the aim of creating emotional lighting, lighting that goes beyond the function of giving light to the spaces.

We understand that it is in same importance the fact of giving light to the space as the way it is given. The way it creates experiences of living. Therefore, a way to improve quality of our lives.

We also take care of very important matters regarding environment and social welfare. All our products are made in Spain by expertise people and following the most strict environmental and human rights established by our society.

When a MYO design is made, we always think of how it will improve the emotions of the final users when enjoying the light.

Light must accomplish the function and function goes beyond lighting.

Because LIGHT IS MAGIC....



[www.myo-spain.com](http://www.myo-spain.com)

[info@myo-spain.com](mailto:info@myo-spain.com)

# MESSIER

## CARACTERÍSTICAS

Malla realizada en acero que crea un efecto mágico.  
Inspirada en las luces estelares del universo.

## CHARACTERISTICS

Steel mesh that creates magic effect.  
Inspired by the star lights of universe.





# MESSIER



**28052/1B** 1 ♀ 9W / 1 ♀ 14W  
→ 68 cm. → 26<sup>3/4</sup>"  
↓ 70 cm. ↓ 27<sup>1/2</sup>"



**28052/10** 1 ♀ 9W / 1 ♀ 14W  
→ 68 cm. → 26<sup>3/4</sup>"  
↓ 70 cm. ↓ 27<sup>1/2</sup>"



28052/1B



# AURA

## CARACTERÍSTICAS

Malla de acero creando un juego de diferentes intensidades de transparencia.

Diseño etéreo muy fácil de combinar en cualquier interior.

## CHARACTERISTICS

Steel mesh that creates a magic light effect.

A game of different transparency intensities give a big added value to this ethereal design.

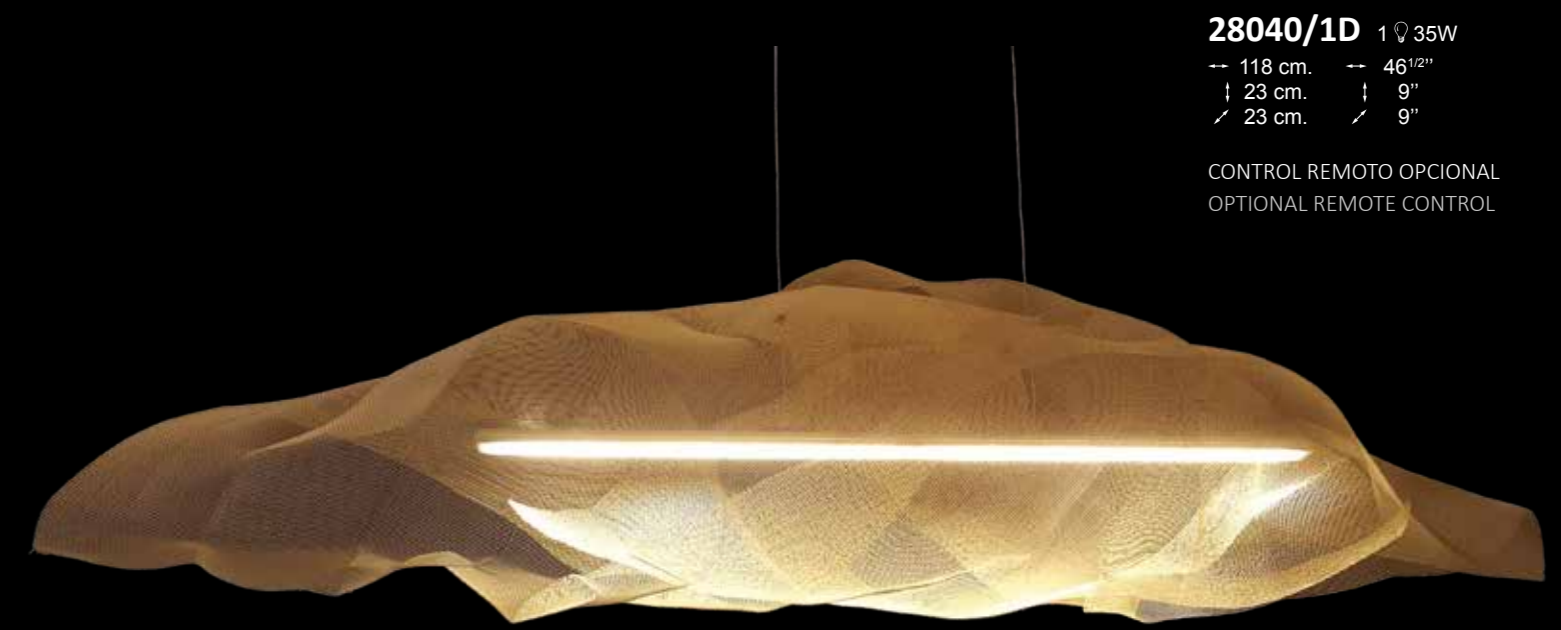
Due to its lightness. It will easily combine within any interior.





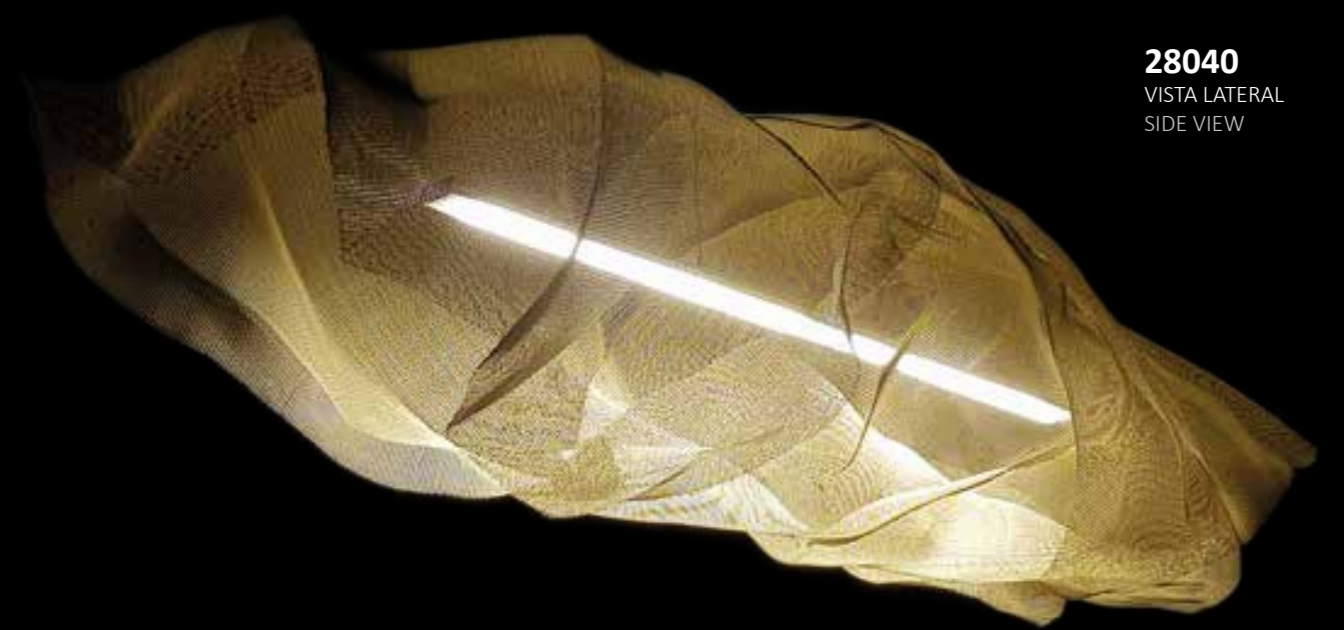






**28040/1D** 1  $\heartsuit$  35W  
-- 118 cm. -- 46<sup>1</sup>/<sub>2</sub>"  
| 23 cm. | 9"  
/ 23 cm. / 9"

CONTROL REMOTO OPCIONAL  
OPTIONAL REMOTE CONTROL



**28040**  
VISTA LATERAL  
SIDE VIEW



# AURA



**28040/1B** 1 ⚡ 35W

→ 118 cm. → 46<sup>1/2</sup>"  
↓ 23 cm. ↓ 9"  
↙ 23 cm. ↘ 9"

CONTROL REMOTO OPCIONAL  
OPTIONAL REMOTE CONTROL



**29017/1B** 1 ⚡ 18W

→ 25 cm. → 9<sup>3/4</sup>"  
↓ 56 cm. ↓ 22"

DIMMABLE



# UNFOCUSED

## CARACTERÍSTICAS

Malla de acero creando un efecto mágico e inspirada en efecto fotográfico "Bokeh" de luces desenfocadas de fondo.

Las transparencias forman parte de un atractivo juego de luces.

## CHARACTERISTICS

Steel mesh design that creates magic effect and inspired by the «bokeh» photographic effect for unfocused background lights.

Transparencies are part of an attractive game of lights.





28051/30



28051/30 12 20W

— 75 cm. — 29<sup>1</sup>/<sub>2</sub>"  
↓ 45 cm. ↓ 17<sup>3</sup>/<sub>4</sub>"





# UNFOCUSED



**28051/10** 24  $\varnothing$  20W  
-- 224 cm. -- 88"  
↓ 45 cm. ↓ 17<sup>3</sup>/<sub>4</sub>"  
↙ 55 cm. ↘ 21<sup>1</sup>/<sub>2</sub>"

COMPOSICION DE 6  
COMPOSITION OF 6

**28051/10** 4  $\varnothing$  20W  
-- 40 cm. -- 15<sup>3</sup>/<sub>4</sub>"  
↓ 45 cm. ↓ 17<sup>3</sup>/<sub>4</sub>"

DIMENSIONES DE UNA UNIDAD  
ONE PIECE DIMENSION



28051/30



**28051/10**  
COMPOSICION DE 6  
COMPOSITION OF 6



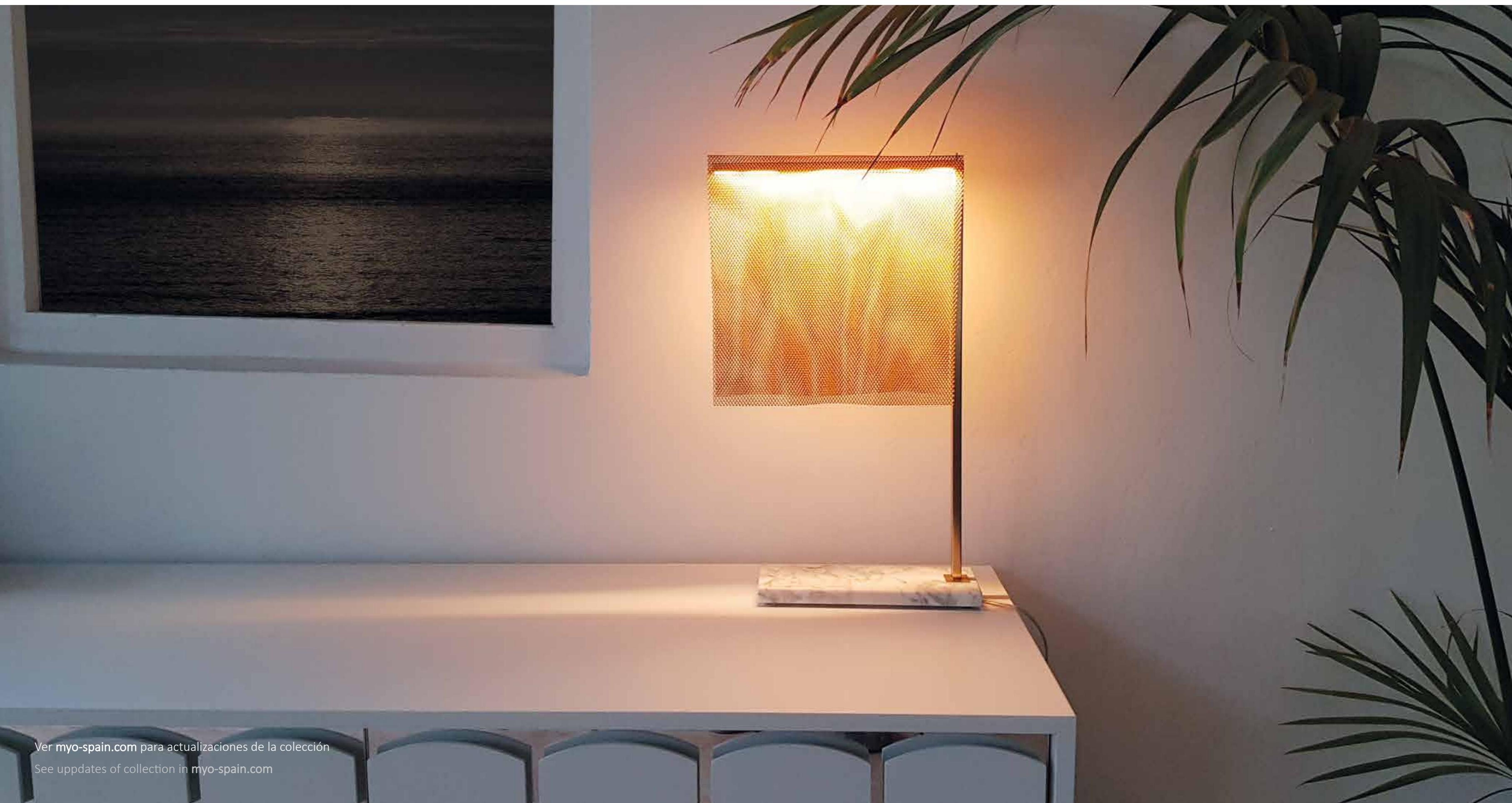
# SICILIA

## CARACTERÍSTICAS

Inspirada en la belleza de los objetos cotidianos.  
Su baño de oro (opcional) y mármol de carrara  
añaden un toque de calidad.

## CHARACTERISTICS

Inspired by the daily objects simple beauty.  
Its gold plated (optional) and carrara marble will ad  
dan elegant touch.





28045/50



28045/50 5 6W  
-- 60 cm. -- 23 1/2"  
↓ 70 cm. ↓ 27 1/2"

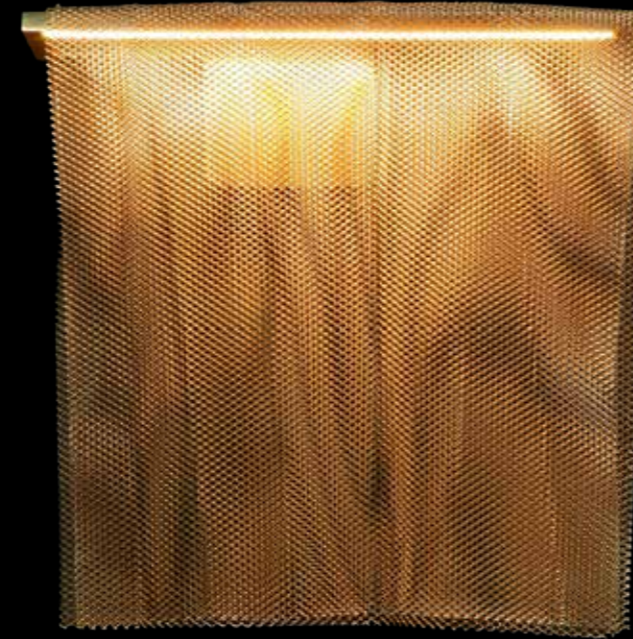




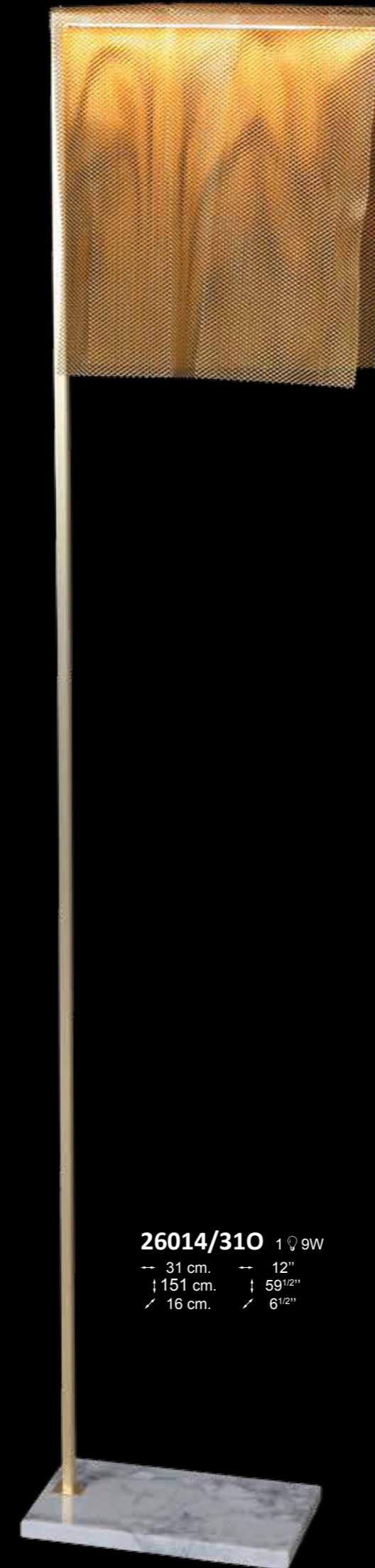
# SICILIA



**27009/310** 1 Ø 9W  
 -- 31 cm. -- 12"  
 † 31 cm. † 12"  
 / 8 cm. / 3"



**28053/350** 1 Ø 9W  
 -- 35 cm. -- 3<sup>3/4</sup>"  
 † 40 cm. † 15<sup>3/4</sup>"



**26014/310** 1 Ø 9W  
 -- 31 cm. -- 12"  
 † 151 cm. † 59<sup>1/2</sup>"  
 / 16 cm. / 6<sup>1/2</sup>"

**29018/310** 1 Ø 9W  
 -- 31 cm. -- 12"  
 † 57 cm. † 22<sup>1/2</sup>"  
 / 10 cm. / 4"





# GEO

## CARACTERÍSTICAS

Diseño minimal donde la forma sigue estrictamente a la función.

Geo te ayuda a crear una atmósfera de libertad espacial.

Hecha a mano en acero para un acabado de alta calidad.

## CHARACTERISTICS

Minimal desing where form strictly follows function.

It will help to create an atmosphere of passionate freedom.

Hand made in steel materia for a perfect finish.





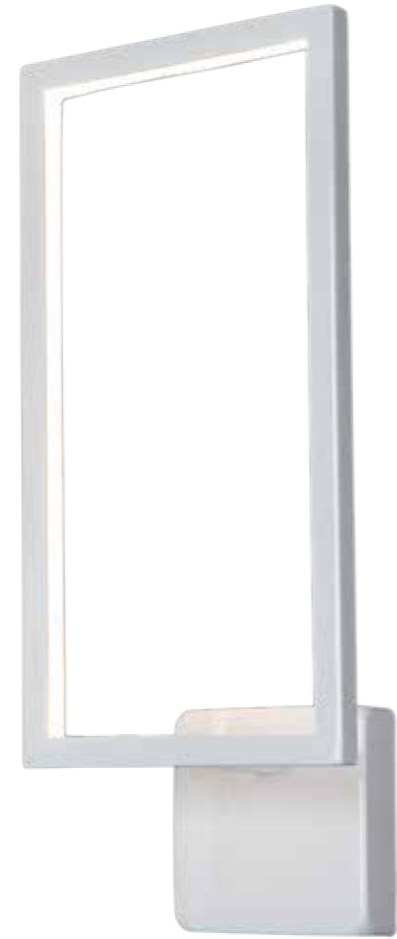
GEO



28043/1 1  $\varnothing$  40W  
↔ 55 cm. ↔ 21<sup>1</sup>/<sub>2</sub>"  
↑ 100 cm. ↑ 39<sup>1</sup>/<sub>2</sub>"



# GEO



**27010/15** 1 9W

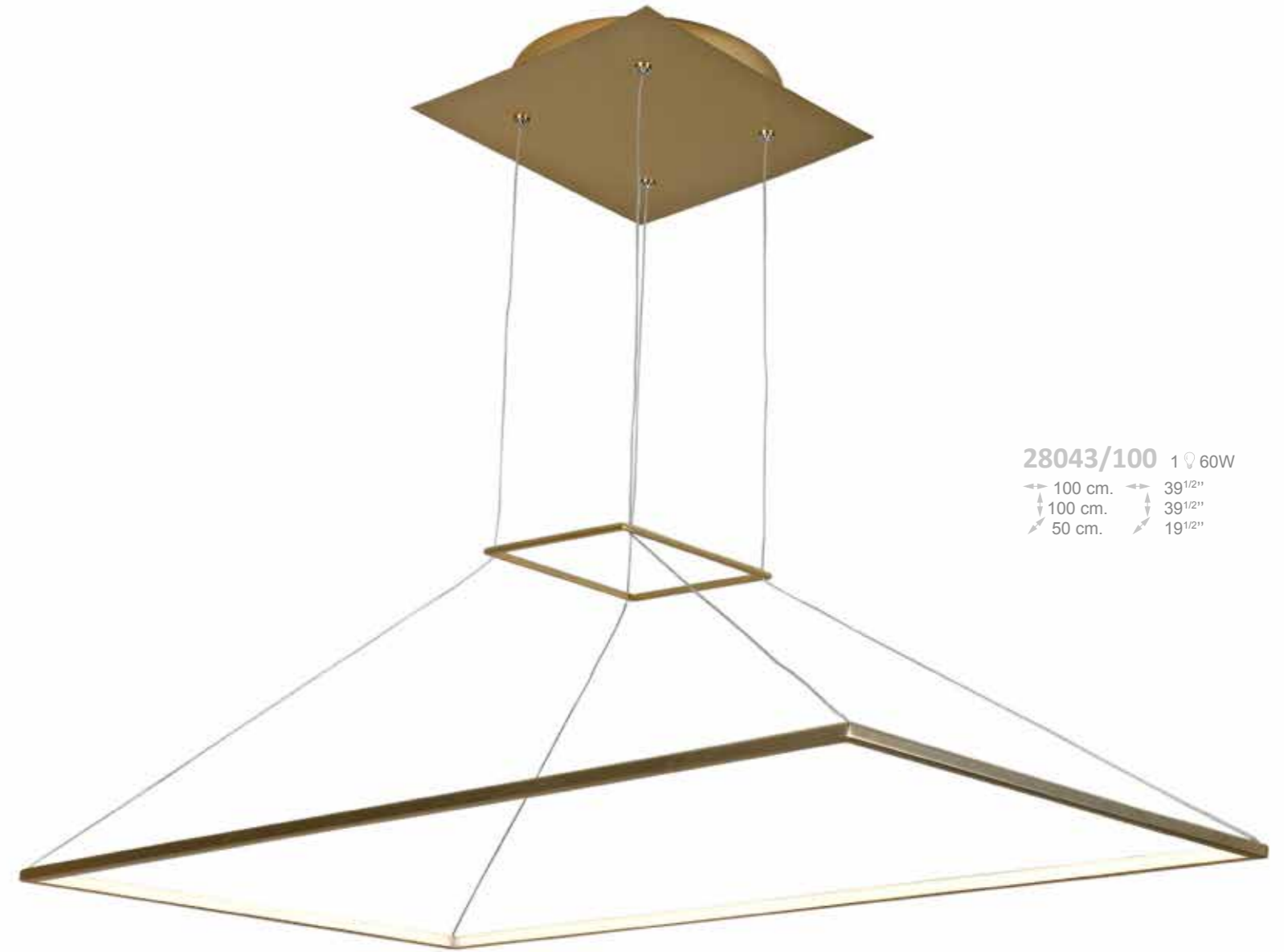
15 cm. 6"  
34 cm. 13 1/2"  
9 cm. 3 1/2"

MAGNETIC SYSTEM FOR A  
CLEAN DESIGN



**29019/15** 1 9W

15 cm. 6"  
29 cm. 11 1/2"  
8 cm. 3"



**28043/100** 1 60W

100 cm. 39 1/2"  
100 cm. 39 1/2"  
50 cm. 19 1/2"



# FAIRMOUNT

## CARACTERÍSTICAS

Colección de estilo “ Mid Century” con cristal opal blanco y latón.

Un icono del “Styling”.

## CHARACTERISTICS

Mid century style collection made with beautiful double White opal glass and brass.

A must have for any styling ambient.





# FAIRMOUNT



**26010/2** 2  $\varnothing$  60W  
 ↳ 55 cm. ↳ 21<sup>3</sup>/<sub>4</sub>"  
 ↓ 175 cm. ↓ 68<sup>3</sup>/<sub>4</sub>"



**27006/1** 1  $\varnothing$  60W  
 ↳ 14 cm. ↳ 5<sup>1</sup>/<sub>2</sub>"  
 ↳ 40 cm. ↳ 15<sup>3</sup>/<sub>4</sub>"  
 ↳ 24 cm. ↳ 9<sup>1</sup>/<sub>2</sub>"



**29013/1** 1  $\varnothing$  60W  
 ↳ 20 cm. ↳ 7<sup>3</sup>/<sub>4</sub>"  
 ↳ 56 cm. ↳ 22"



**28029/10** 10  $\varnothing$  60W  
 ↳ 80 cm. ↳ 31<sup>1</sup>/<sub>2</sub>"  
 ↓ 124 cm. ↓ 48<sup>3</sup>/<sub>4</sub>"

VISTA DIFERENTE  
 DIFFERENT VIEW



**28029/10** 10  $\varnothing$  60W  
 ↳ 80 cm. ↳ 31<sup>1</sup>/<sub>2</sub>"  
 ↓ 124 cm. ↓ 48<sup>3</sup>/<sub>4</sub>"

VISTA DIFERENTE  
 DIFFERENT VIEW





# MALEVICH

## CARACTERÍSTICAS

Revolución de diferentes partes de un cuadrado para crear una esfera.

Acero pintado a mano y led dimable para crear tu propia atmósfera de luz.

## CHARACTERISTICS

Revolution of different parts of a square to create an sphere.

Hand painted Steel and dimmable led will create the atmospher you are looking for.

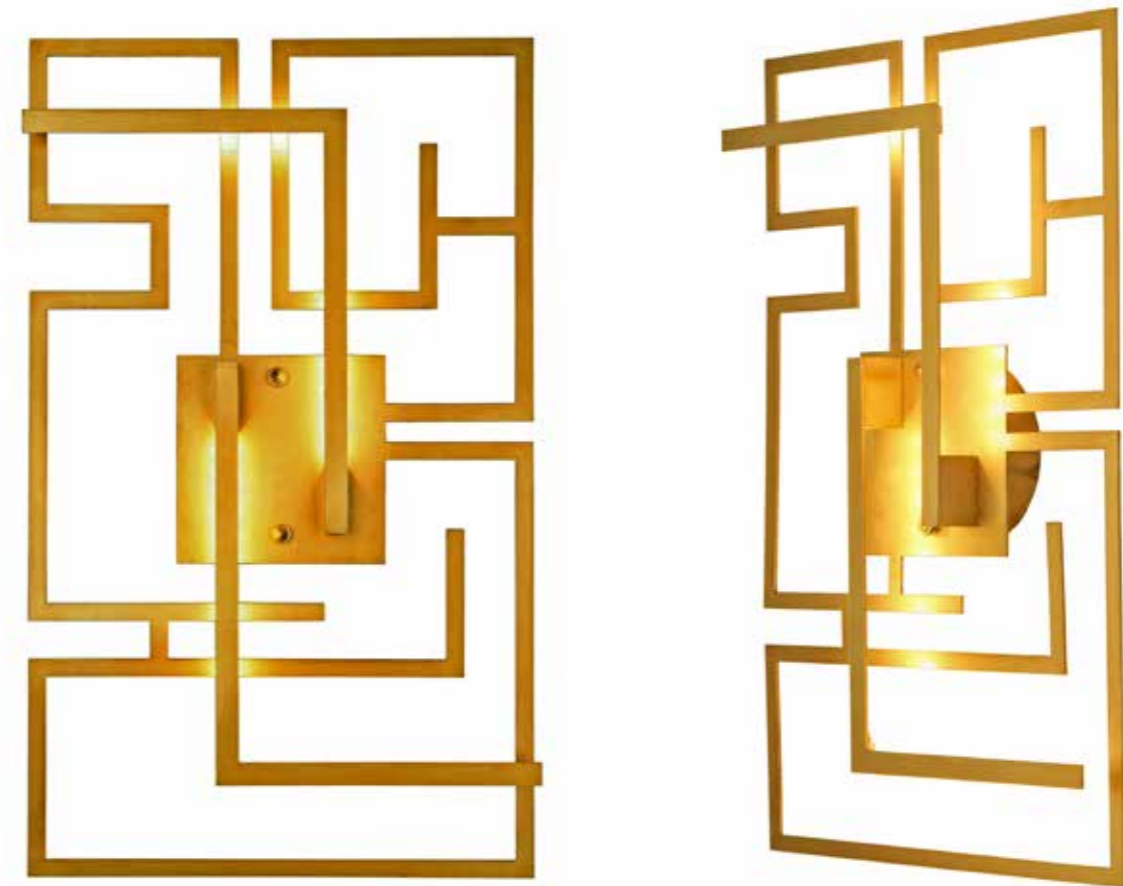




MALEVICH



**28024/60** 1  $\varnothing$  57W  
 ← 60 cm. ← 23<sup>1</sup>/<sub>2</sub>"  
 ↓ 105 cm. ↓ 41<sup>1</sup>/<sub>4</sub>"



VISTA FRONTAL  
FRONT VIEW

VISTA LATERAL  
SIDE VIEW

**27003/35** 1  $\varnothing$  11W  
 ← 29 cm. ← 11<sup>1</sup>/<sub>2</sub>"  
 ↓ 48 cm. ↓ 18<sup>3</sup>/<sub>4</sub>"  
 8 cm. 3<sup>1</sup>/<sub>4</sub>"



**28024/80** 1  $\varnothing$  84W  
 ← 80 cm. ← 31<sup>1</sup>/<sub>2</sub>"  
 ↓ 125 cm. ↓ 49<sup>1</sup>/<sub>4</sub>"



# LUPA

## CARACTERÍSTICAS

Lampara de pie con luz directa e indirecta dirigida por un espejo superior.

Realizada en latón, acero y mármol de carrara.

El espejo tiene una rotación de 340º.

## CHARACTERISTICS

Floor lamp with indirect/direct light directed by top mirror, made in Brass, Steel and Carrara Marble.

The mirror rotates 340º to direct the led.





# LUPA



26013/1 1 Ø 18W  
↔ 34 cm. ↔ 13<sup>1</sup>/<sub>4</sub>"  
↑ 179 cm. ↓ 70<sup>1</sup>/<sub>4</sub>"

DETALLE  
DETAILS



# WERKBUND

## CARACTERÍSTICAS

Combinación de bolas en acero o latón dando formas orgánicas.

Reminiscencia de la corriente “Deutscher Werkbund” y su uso de maquinaria para generar diseño.

## CHARACTERISTICS

Combination of different ball of brass or steel in organic forms.

This collection reminds of the deutscher werkbund and the initial use of machinery to create design at the beginning of 20<sup>TH</sup> century.







28023/9L 9 Ø 40W  
100 cm. 39 1/2"  
160 cm. 63"  
40 cm. 15 3/4"



28023/9H 9 Ø 40W  
100 cm. 39 1/2"  
160 cm. 63"  
40 cm. 15 3/4"



# WERKBUND



**28023/5LH** 5  $\varnothing$  40W  
 ↕ 32 cm.   ↕ 12 1/2"  
 ↓ 65 cm.   ↓ 25 1/2"



**28023/1H** 1  $\varnothing$  40W  
 ↕ 18 cm.   ↕ 7 1/4"  
 ↗ 160 cm.   ↗ 63"  
 ↘ 30 cm.   ↘ 21"



**28023/1L** 1  $\varnothing$  40W  
 ↕ 18 cm.   ↕ 7 1/4"  
 ↗ 160 cm.   ↗ 63"  
 ↘ 30 cm.   ↘ 21"



**28023/15LH** 15  $\varnothing$  40W  
 ↕ 150 cm.   ↕ 59"  
 ↗ 160 cm.   ↗ 63"  
 ↘ 40 cm.   ↘ 15 3/4"



**29014/1L** 1  $\varnothing$  60W  
 ↕ 20 cm.   ↕ 7 3/4"  
 ↓ 52 cm.   ↓ 20 1/2"





# RAMIE

## CARACTERÍSTICAS

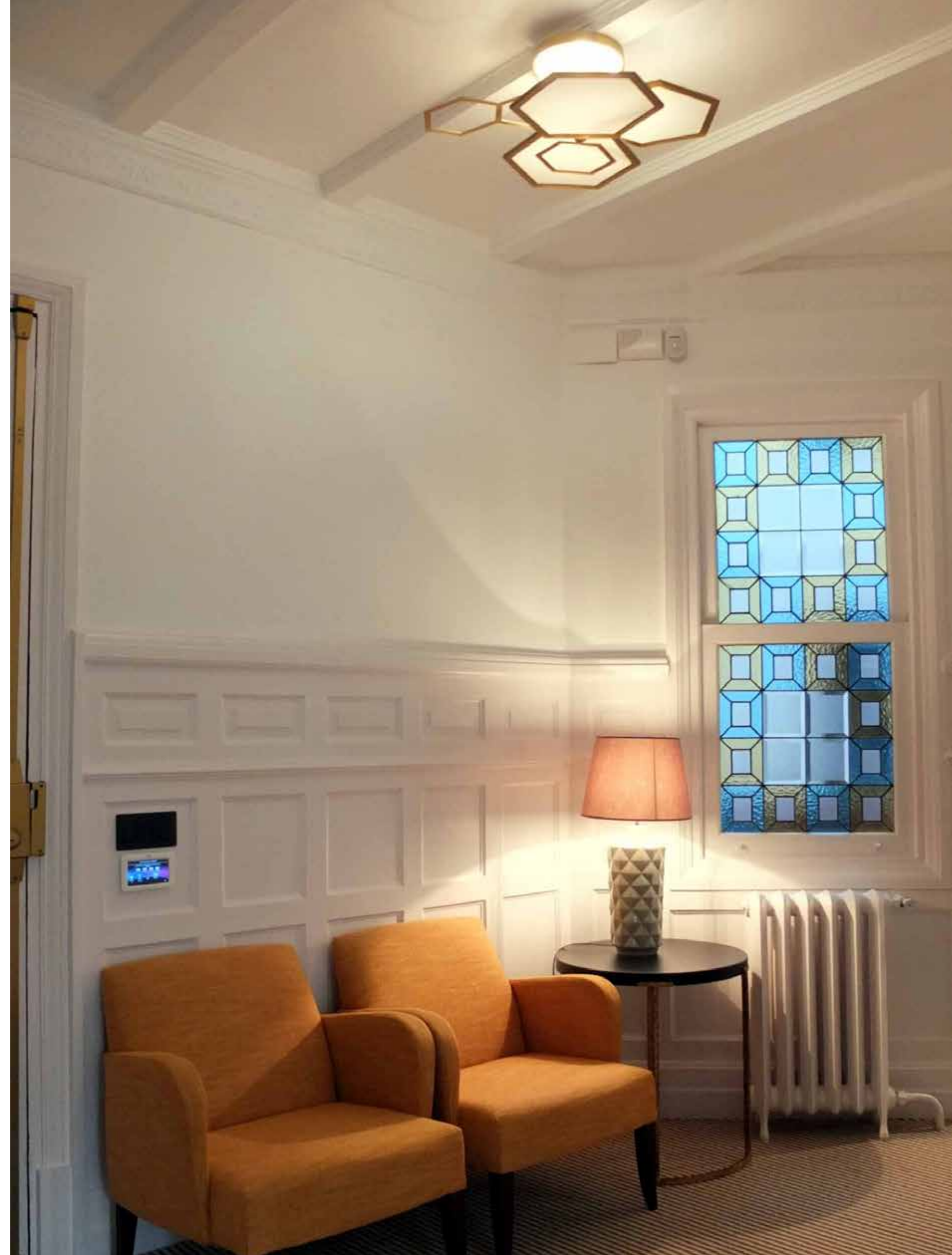
Deconstrucción de hexágonos.

Latón y cristal opal blanco con forma hexagonal.

## CHARACTERISTICS

Deconstruction of hexagons.

Brass and double opal white glass with hexagonal shape.

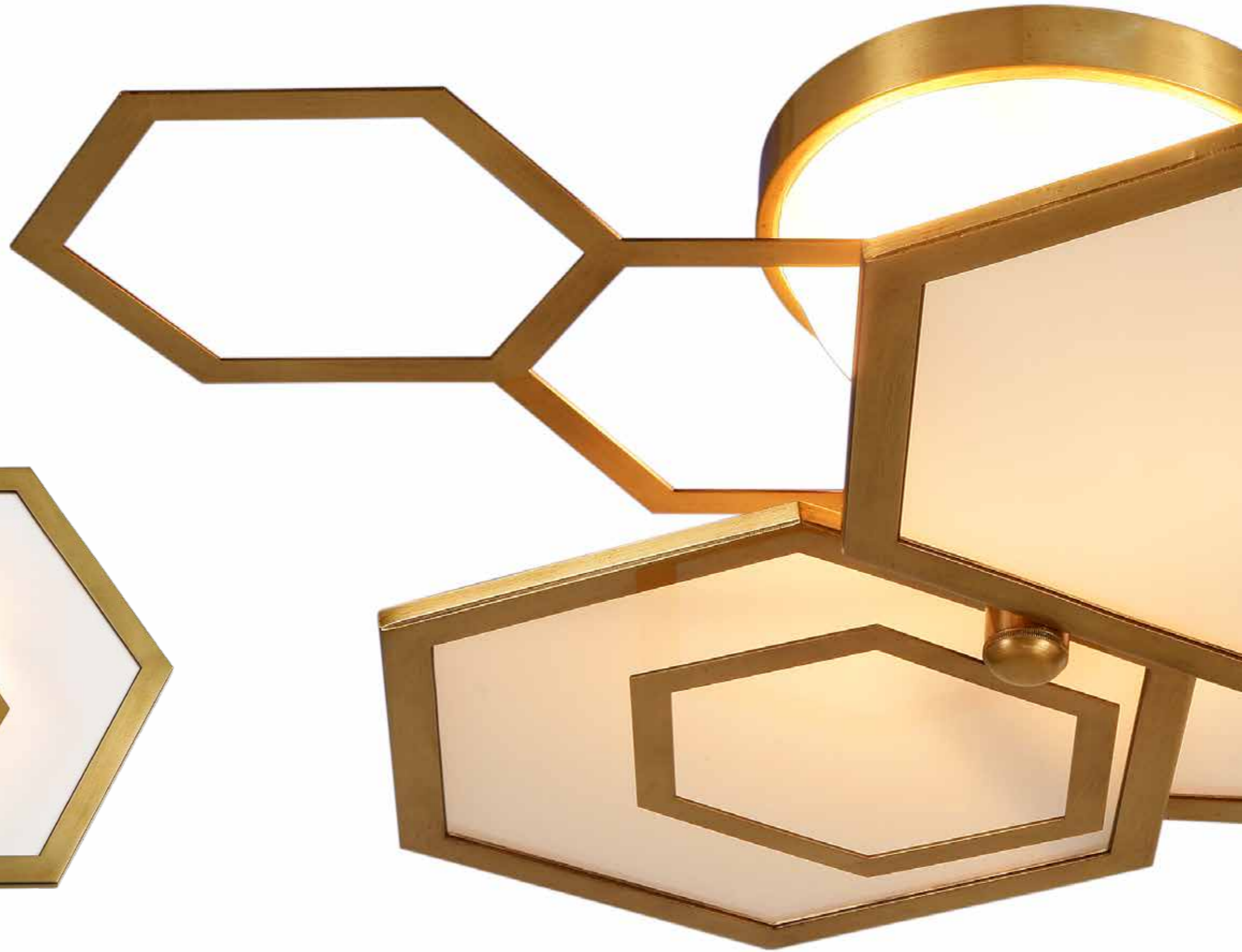




# RAMIE



8641/50 3 G9  
↑ 46 cm.    ↑ 18<sup>1</sup>/<sub>4</sub>"  
↓ 8 cm.     ↓ 3<sup>1</sup>/<sub>4</sub>"



8641/68 5 G9  
↑ 68 cm.    ↑ 27"  
↓ 20 cm.    ↓ 8"



# RAMIE



**8641/68** 5 G9  
← 68 cm. → 27"  
↓ 20 cm. ↓ 8"

**8653/80** 12 G9  
← 80 cm. → 31<sup>1</sup>/<sub>2</sub>"  
↓ 87 cm. ↓ 34<sup>1</sup>/<sub>4</sub>"



VISTA DE 8653/80  
VIEW OF 8653/80



VISTA DE 8653/80  
VIEW OF 8653/80



**8653/80R1** 12 G9  
← 80 cm. → 31<sup>1</sup>/<sub>2</sub>"  
↓ 87 cm. ↓ 34<sup>1</sup>/<sub>4</sub>"

SIN CRISTAL OPAL  
WITHOUT OPAL GLASS



# TWIRL

## CARACTERÍSTICAS

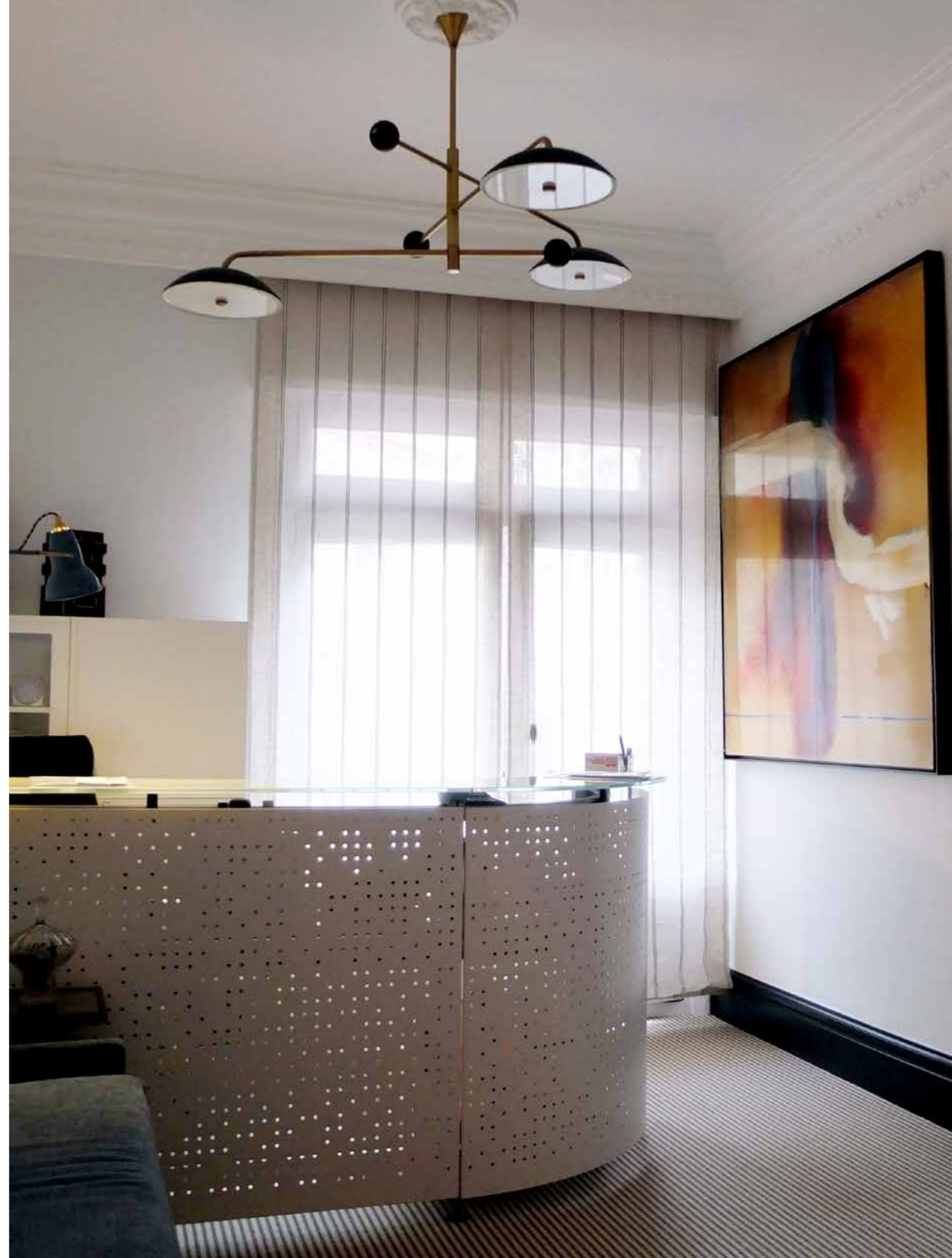
Colgante orientable o fijo con diferentes niveles posibles de altura.

Diferentes combinaciones de acabado disponibles.

## CHARACTERISTICS

Moveable or fix pendant made with several level options. Brass and steel.

Polished brass, mat black and polished brass combination and other custom finishes.





TWIRL



598741ACPL 8 G9  
↔ 151 cm. ↔ 59 1/2"  
↓ 74 cm. ↓ 29 1/4"



598741AEPM 16 G9  
↔ 151 cm. ↔ 59 1/2"  
↓ 92 cm. ↓ 36 1/4"



# CANDLE

## CARACTERÍSTICAS

Sobremesa inspirado en un candelabro de mesa.  
Ofrece una suave e indirecta luz romántica.

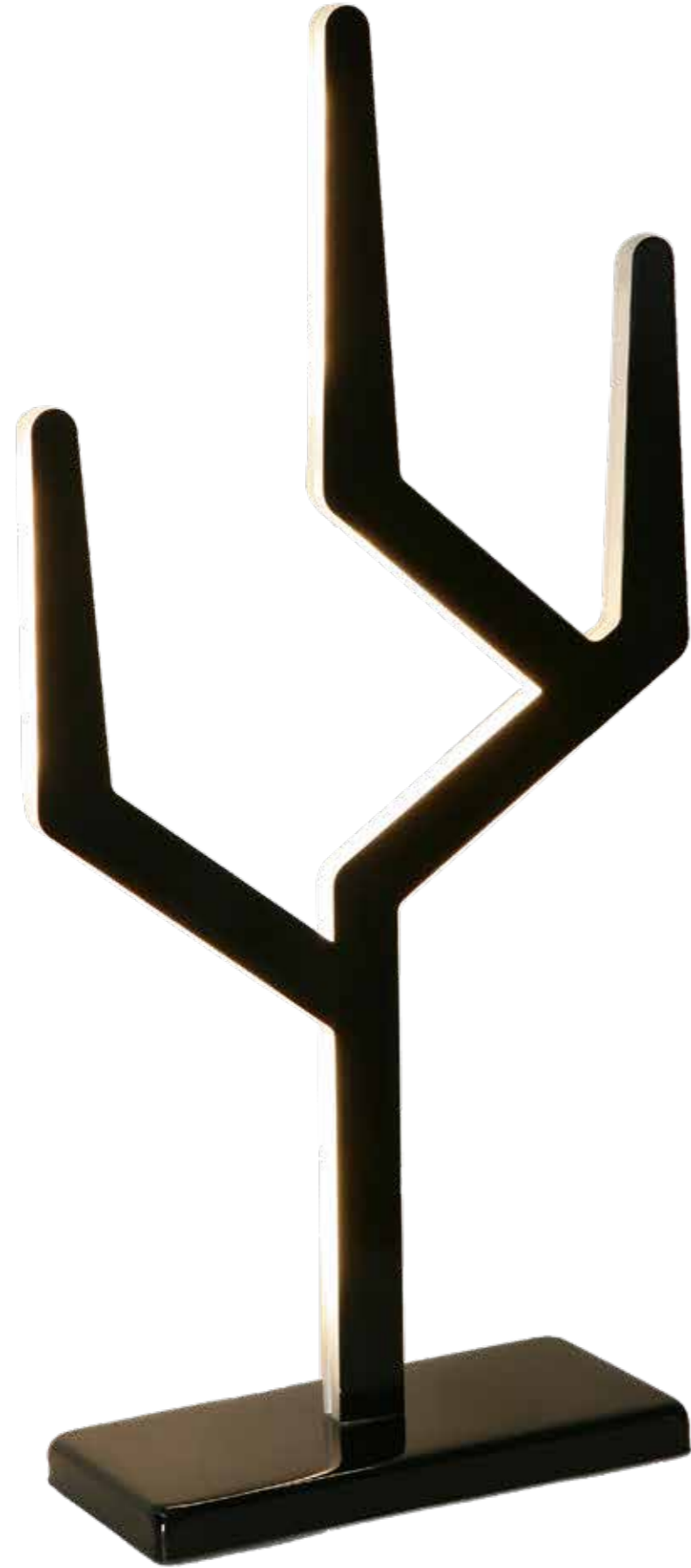
## CHARACTERISTICS

Table light inspired by a flame candle giving indirect and romantic warm led light.

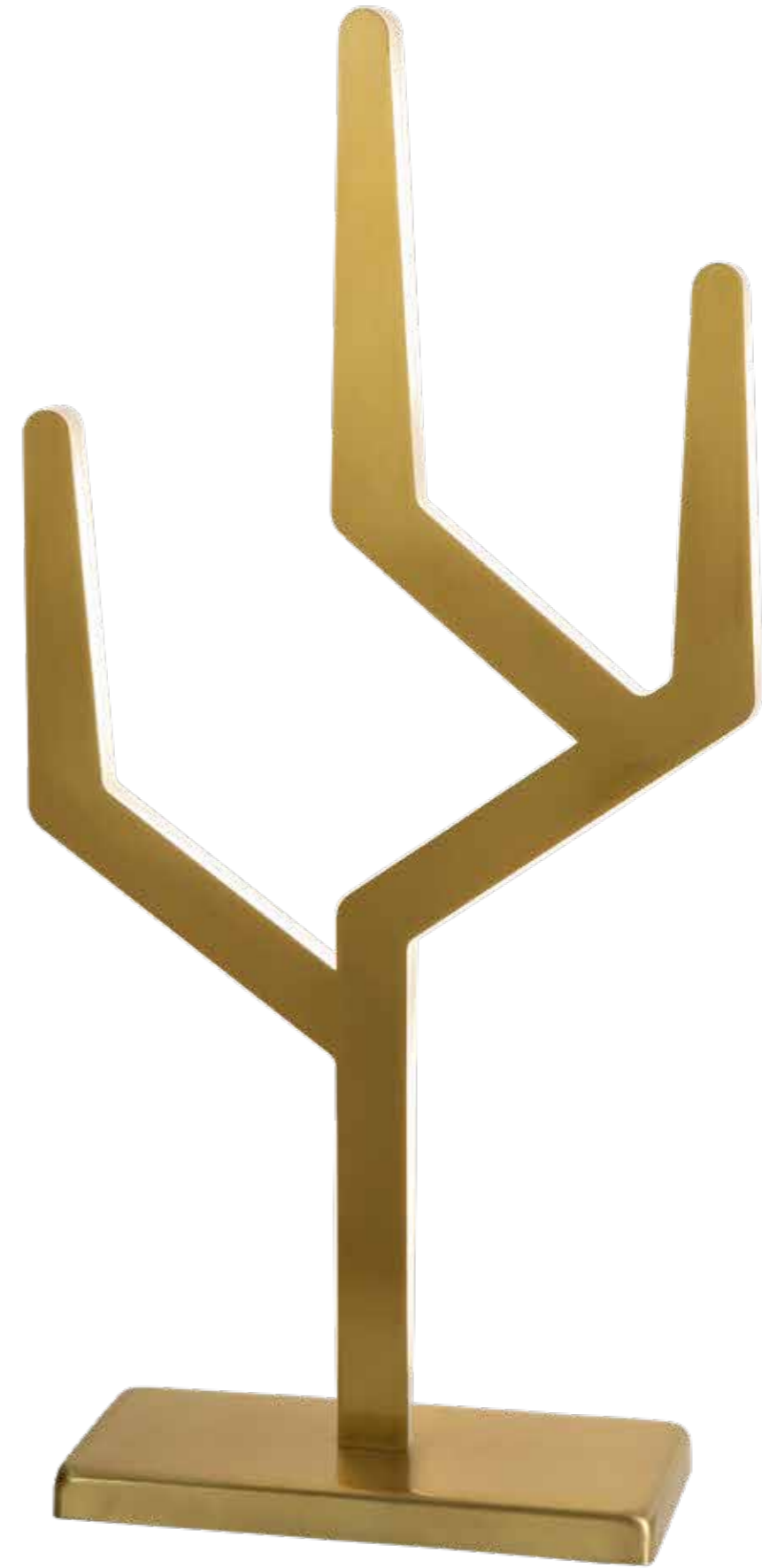




# CANDLE



29011/1H 1  $\varnothing$  6W  
↕ 24 cm. ↕ 9 1/2"  
↕ 48 cm. ↕ 15 3/4"



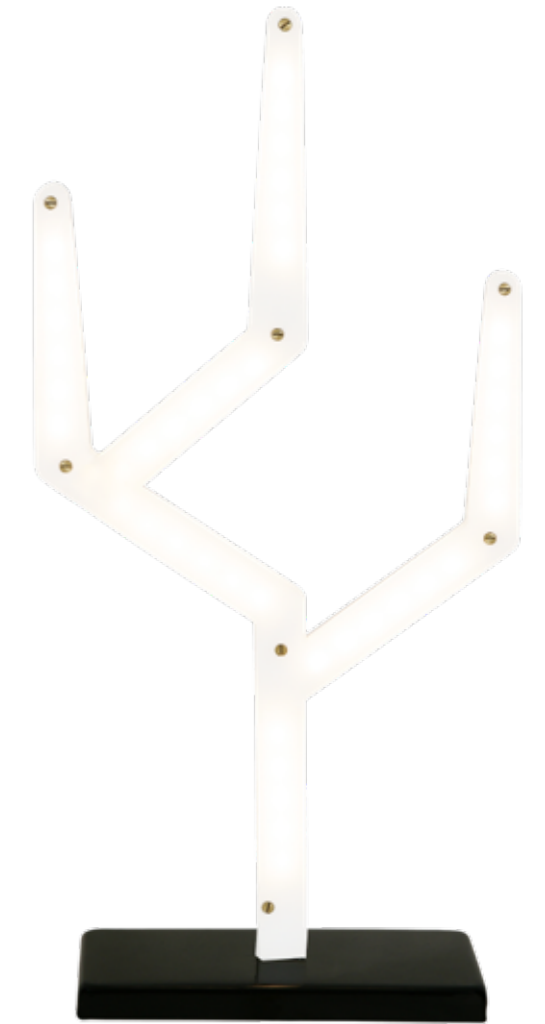
29011/1L 1  $\varnothing$  6W  
↕ 24 cm. ↕ 9 1/2"  
↕ 48 cm. ↕ 15 3/4"



# CANDLE



VISTA FRONTAL  
FRONT VIEW



VISTA TRASERA  
BACK VIEW

29011/1L 1  $\varnothing$  6W  
↕ 24 cm. ↕ 9<sup>1</sup>/<sub>2</sub>"  
↕ 48 cm. ↕ 15<sup>3</sup>/<sub>4</sub>"





# ADELE WINDOW

## CARACTERÍSTICAS

Ventana a otro mundo.

Pantalla de aluminio, difusor en PMMA blanco y motivo de decoración en PMMA negro.

Pregunte por posibles acabados diferentes.

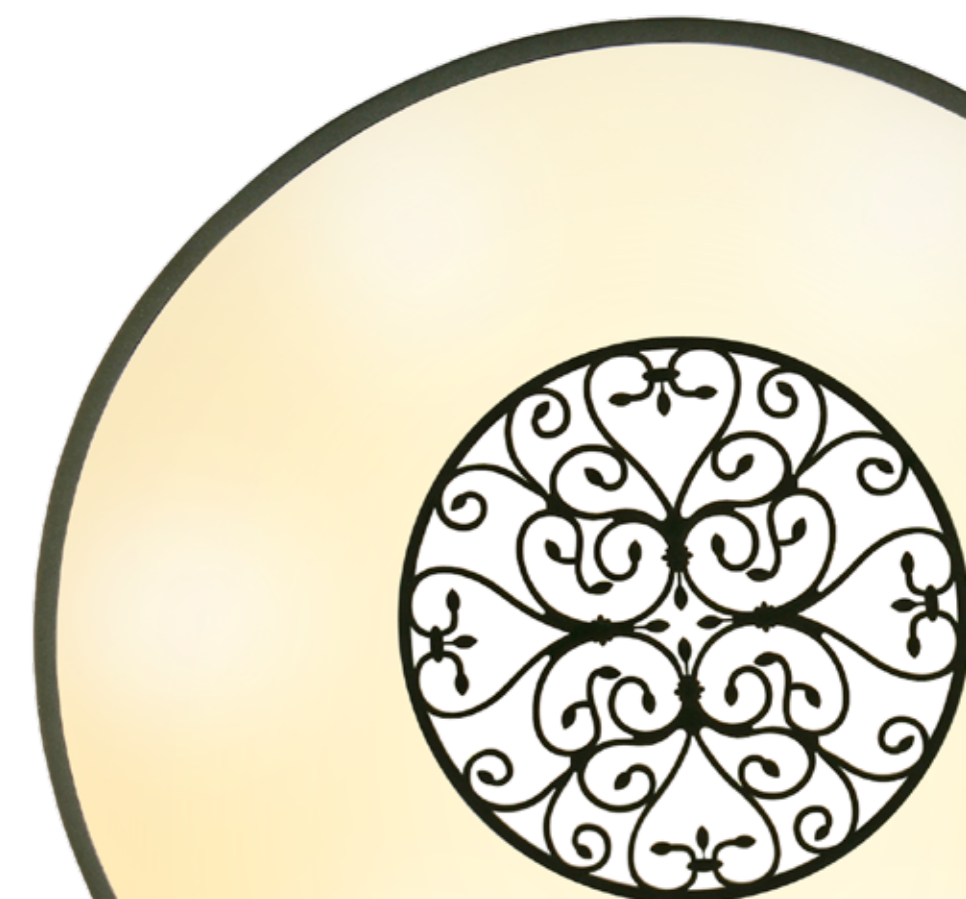
## CHARACTERISTICS

Window to another world.

Aluminium shade, opal bright white PMMA diffuser, black PMMA decorative inside.

Mat black.

Ask for other finishes available.



28022/60N 6 Ø 40W MAX

60 cm.	23 <sup>3</sup> / <sub>4</sub> "
85 cm.	33 <sup>1</sup> / <sub>2</sub> "
65 cm.	25 <sup>3</sup> / <sub>4</sub> "



# LIGHT VADER

## CARACTERÍSTICAS

Pantalla de aluminio y cristal tallado a mano de Bohemia.

Pregunte por diferentes acabados posibles.

## CHARACTERISTICS

Aluminium shade and hand cut crystal.

Mat balck.

Ask for other finishes available.



29007/35T 1 60W MAX

↑ 35 cm.    ← 14"  
↓ 45 cm.    ↓ 17<sup>3</sup>/<sub>4</sub>"



# LIGHT VADER



**28010/35IB** 1  $\varnothing$  60W MAX  
↔ 35 cm. ↔ 14"  
↓ 35 cm. ↓ 14"



**28009/35IB** 1  $\varnothing$  60W MAX  
↔ 35 cm. ↔ 14"  
↓ 15 cm. ↓ 6"



# ÍNDICE

MESSIER .....	2	28024/80 .....	39
28052/1B .....	4	LUPA .....	40
28052/1O .....	4	26013/1 .....	43
AURA .....	6	WERKBUND .....	44
28040/1D .....	11	28023/9L .....	46
28040/1B .....	12	28023/9H .....	47
29017/1B .....	13	28023/5LH .....	48
UNFOCUSED .....	14	28023/1H .....	48
28051/3O .....	17	28023/1L .....	48
28051/1O .....	18	29014/1L .....	48
SICILIA .....	20	28023/15LH .....	49
28045/5O .....	23	RAMIE .....	50
27009/31O .....	24	8641/50 .....	52
28053/35O .....	24	8641/68 .....	53
29018/31O .....	25	8641/68 .....	54
26014/31O .....	25	8653/80 .....	55
GEO .....	26	8653/80R1 .....	55
28043/1 .....	29	TWIRL .....	56
27010/15 .....	30	598741ACPL .....	58
29019/15 .....	30	598741AEPM .....	59
28043/100 .....	31	CANDLE .....	60
FAIRMOUNT .....	32	29011/1H .....	62
27006/1 .....	34	29011/1L .....	63
26010/2 .....	34	29011/1L .....	65
29013/1 .....	34	ADELE WINDOW .....	66
28029/10 .....	35	LIGHT VADER .....	68
MALEVICH .....	36	29007/35T .....	69
28024/60 .....	38	28010/35IB .....	70
27003/35 .....	39	28009/35IB .....	71