



MUSCERINO CORNICI

Produzione aste per cornici e specchiere

Production of frames and mirrors



Production Made in Italy

L'AZIENDA



La lavorazione del legno, per ottenere aste per cornici di alta qualità, è un'arte antica che trova le sue origini nei laboratori artigiani sin dal XVI secolo.

Questa arte è gelosamente tramandata di generazione in generazione, per preservare l'antica maestria napoletana.

Muscerino Cornici si avvale di una quarantennale esperienza per realizzare una gamma di creazioni che vanno dallo stile classico al moderno, per soddisfare ogni tipo di gusto in fatto di cornici.

Quello che troverete qui in questo opuscolo, è una piccola selezione dei profili preferiti dal fondatore dell'azienda, il Sig. Giovanni Muscerino.

Speriamo vivamente che i nostri prodotti siano di vostro gradimento!



The workmanship of the wood, to obtain high quality picture frames, is an ancient art that its origins in artisan laboratories since the 16th Century.

This art is jealously handed down from one generation to another, to preserve Neapolitan ancient craftsmanship.

Muscerino Cornici uses a forty year old experience to realize a range of creations that goes from classic style to modern style, in the way to satisfy every taste from frames.

What you will find in this brochure, is a small sample book of favourite profiles of the founder of Muscerino Cornici, Mr. Giovanni Muscerino.

We hope you will like our products!



Art. 412-080



Art. 412-180



Art. 412-30 PV



Art. 412-44 L



Art. 412-30 L



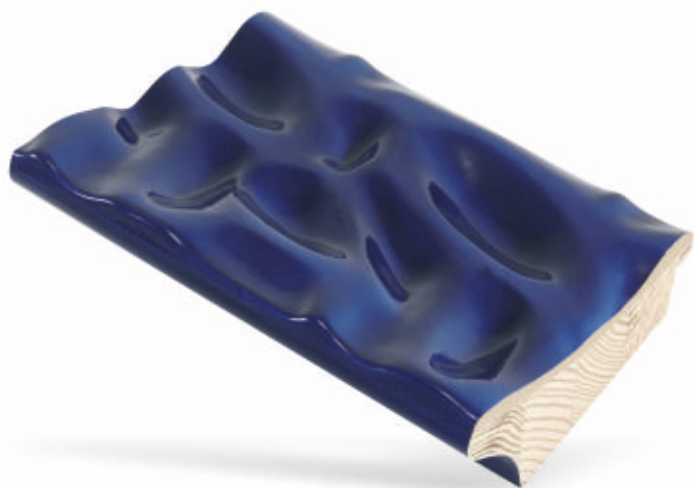
Art. 413-44 L



Art. 413-30 L



Art. 413-50 L



Art. 413-70 L



Art. 003-01



Art. 003-11



Art. P100 BIS-06



Art. P100 BIS-01 CPF



Art. P100 BIS-11



Art. P100 BIS-30 PV



Art. 525-080



Art. 525-180



Art. 525-30.01



Art. 525-30.11



Art. 525-44.01



Art. 525-44.11



Art. 525-30 SB



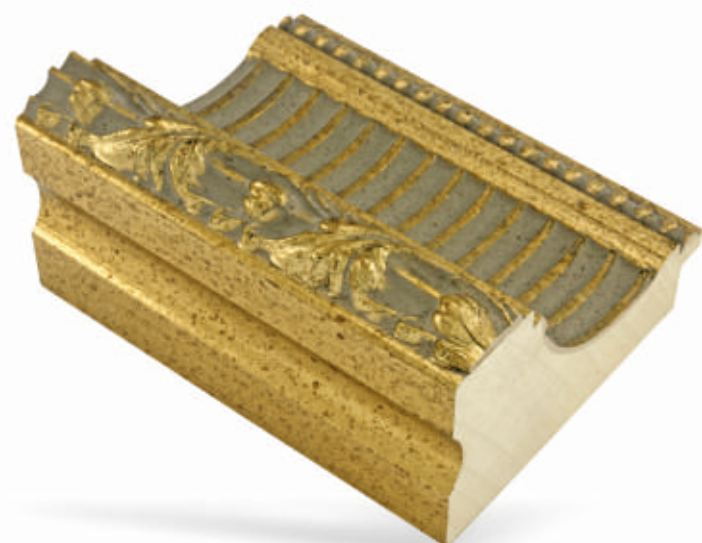
Art. 525-01.50



Art. 525-30 L



Art. 525-44 L



Art. 3014-01



Art. 3014-06



Art. 8690-080



Art. 8690-180



Art. 8690-30 L



Art. 8690-44 L



Art. 8690-01



Art. 8690-11



Art. 526-11



Art. 526-01 L



Art. 526-06



Art. 526-16



Art. 526-30.11



Art. 526-30 SB



Art. 526-30 L



Art. 526-44 L



Art. 851-01



Art. 851-30SB



Art. 405-01



Art. 405-080



Art. 405-01 CPF



Art. 405-11



Art. 405-180



Art. 405-11 CPF



Art. 405-30 L



Art. 405-44 L



Art. 405-30 PV



Art. 411-080



Art. 411-180



Art. 411-01.30



Art. 411-11.30



Art. 411-30 L



Art. 411-44 L



Art. 411-70 L



Art. 411-40 L



Art. 411-50 L



Art. 411-60 L



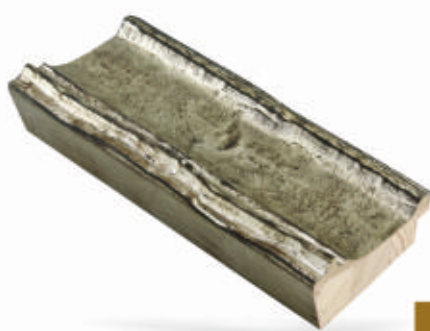
Art. 411-11 L



Art. 411-30 PV



Art. 410-080



Art. 410-180



Art. 410-30.01



Art. 410-30.11



Art. 410-30 L



Art. 410-44 L



Art. 410-40 L



Art. 410-70 L



Art. 410-50 L



Art. 410-30 PV



Art. 106-01



Art. 107-01



Art. 106-30 STR



Art. 107-30 STR



Art. 106-44 STR



Art. 107-44 STR



Art. 418-080



Art. 418-01 CPF



Art. 418-180



Art. 418-11 CPF



Art. 418-044



Art. 418-30 SB



Art. 319-080



Art. 319-30.01



Art. 23-006



Art. 151-044



Art. 151-080



Art. 151-180



Art. 313TR-013



Art. 313TR-11



Art. 313-30 L



Art. 313-44 L



Art. 313-30.01



Art. 313-30 SB



Art. F47-01



Art. F47-30.01



Art. F47-11



Art. 315TR-06



Art. 3010-04



Art. 3001-04



Art. 605-01



Art. 605-11



Art. 605-30 L



Art. 605-44 L



Art. 605-70 SF



Art. 605-50 SF



Art. 2000BIS-0050



Art. 2000BIS-0040



Art. 2000BIS-0044



Art. 2000BIS-0070



Art. 2000BIS-01



Art. 2000BIS-11



Art. 2139BIS-01



Art. 2139BIS-30PV



Art. 2139BIS-040



Art. 425-011



Art. 425-111



Art. 425-080



Art. 425-180



Art. F48-080



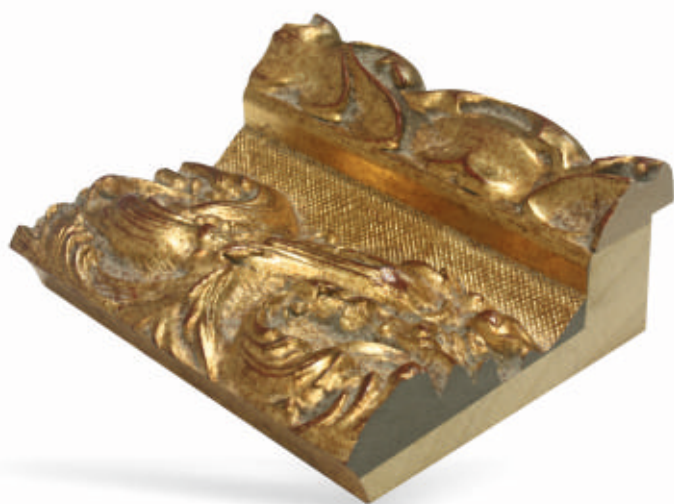
Art. F48-180



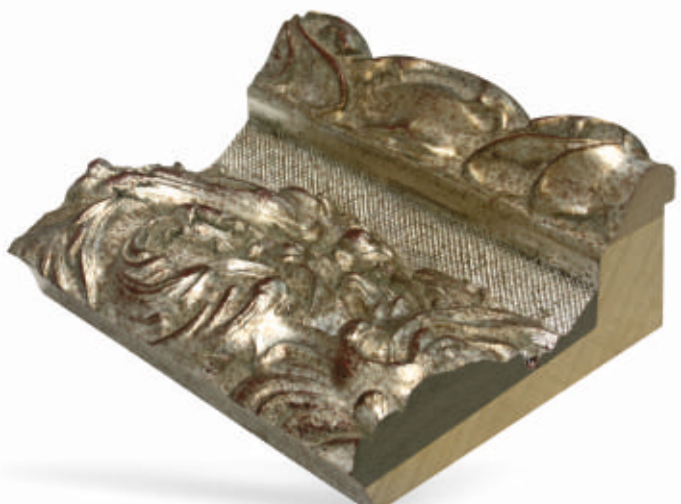
Art. F48-01



Art. F48-044



Art. 8300-01



Art. 8300-11



Art. 3002-04



Art. 3009-01



Art. 870-01



Art. 860-06



Art. 3013-080



Art. 985-06



Art. 8400-01



Art. 8400-11



Art. 852-080



Art. 852-180



Art. 852-30 L



Art. 852-44 L



Art. 852-01.30



Art. 852-30 SB



Art. 117-11 PET



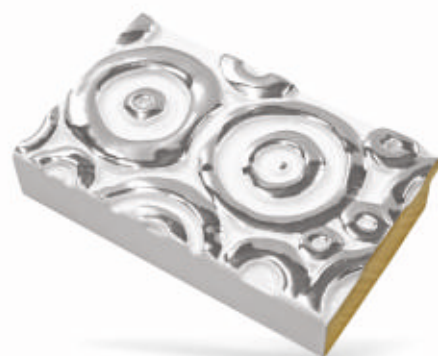
Art. 117-44.11



Art. 2585-080



Art. 2585-180



Art. 2585-30.11 L



Art. 2585-30.01



Art. 2585-30.11



Art. 2585-30 L



Art. 612-01 L



Art. 612-11 L



Art. 612-30 L



Art. 612-44 L



Art. 612-50 SF



Art. 612-70 SF



Art. 602-01



Art. 3021-011



Art. 3021-111



Art. 983-04



Art. 983-14



Art. 148-01



Art. 312TR-013



Art. 312TR-113



Art. 311TR-013



Art. 311TR-113



Art. 2132-06



Art. 2132-16



Art. 145-04



Art. 22368-01



Art. 2368-11



Art. 145-14



Art. 177-080



Art. 177-180



Art. 176-080



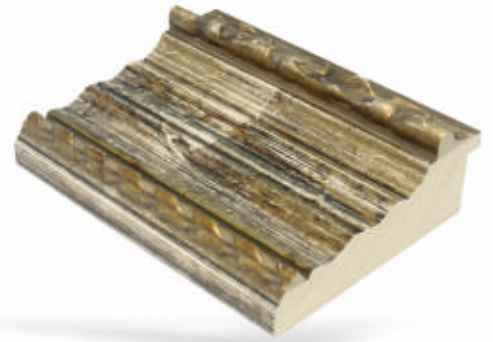
Art. 176-180



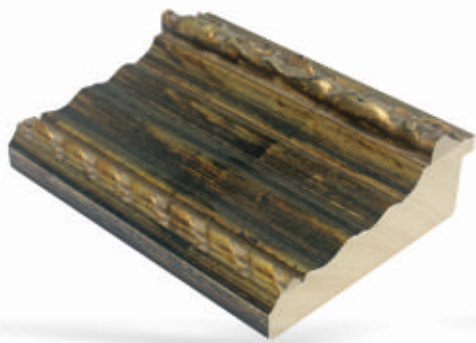
Art. G3BIS-080



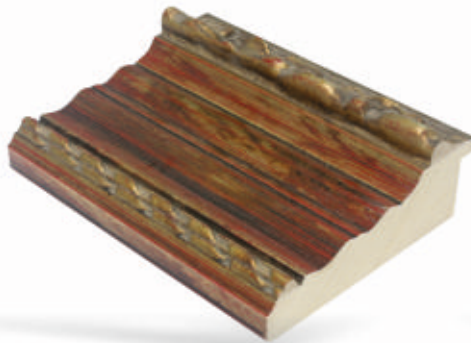
Art. G3BIS-180



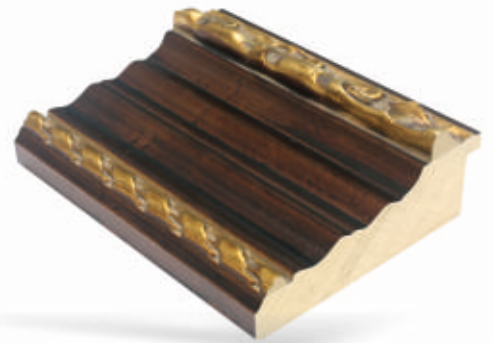
Art. G3BIS-0030



Art. G3BIS-0044



Art. G3BIS-0050



Art. G3BIS-006



Art. G3BIS-30.11



Art. G3BIS-30PV



Art. 161-COUNTRY



Art. 127-TRENDY



Art. 523-01.50



Art. 523-11.50



Art. 523-30 L



Art. 523-30.01



Art. 523-30.11



Art. 523-44 L



Art. 190-0050



Art. 190-0070



Art. 190-0044



Art. 190-0040



Art. 190R-011



Art. 190R-111



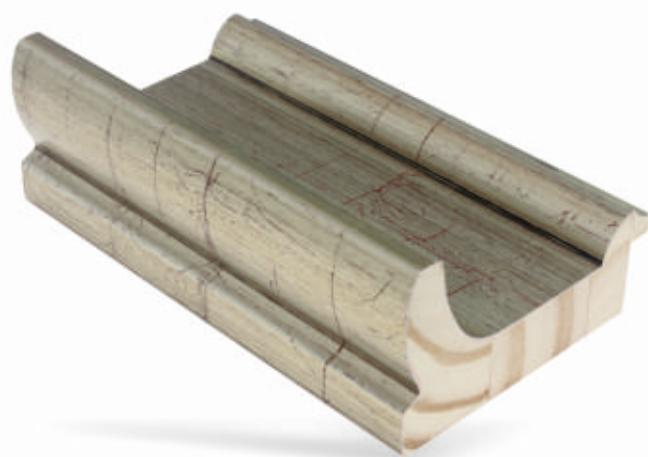
Art. 190R-30 OP



Art. 190R-44 OP



Art. 522-011



Art. 522-111



Art. 522-006



Art. 522-116



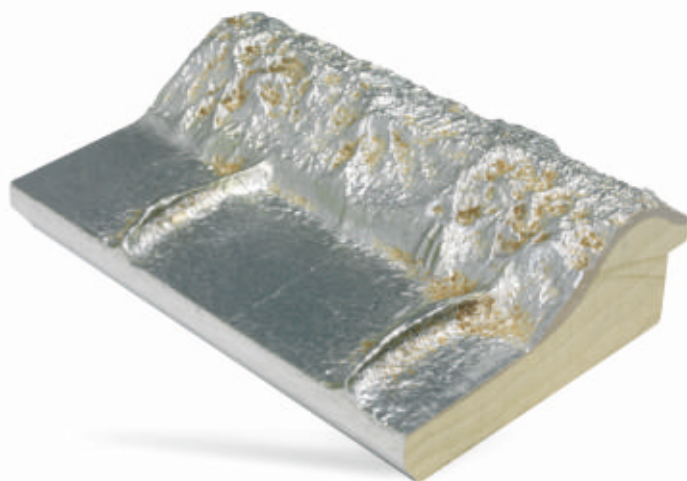
Art. 522-30 OP



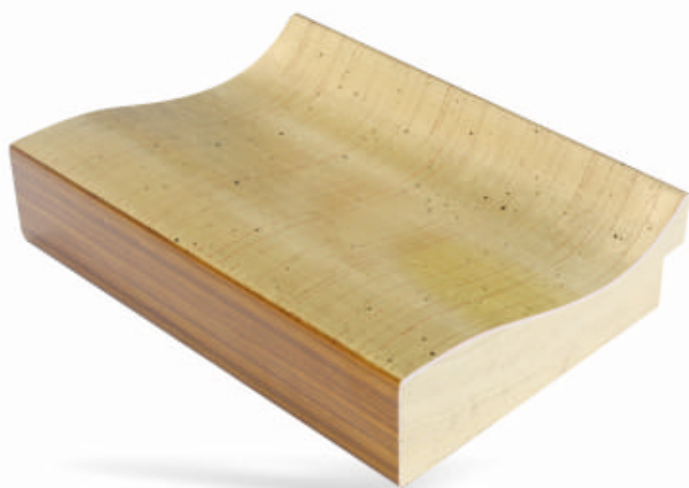
Art. 522-44 OP



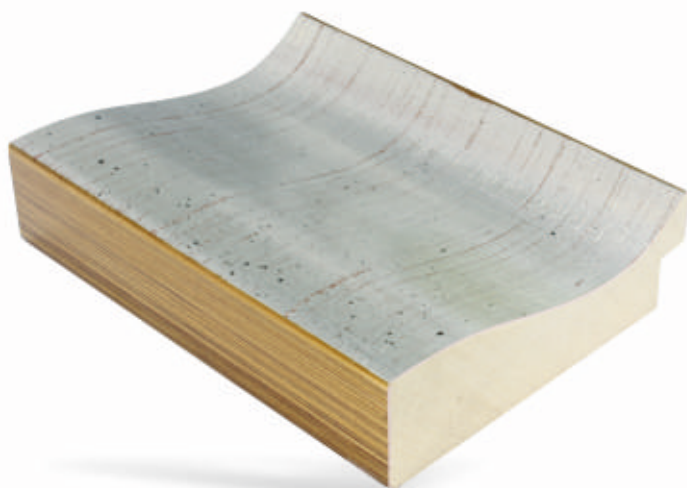
Art. 601-01 L



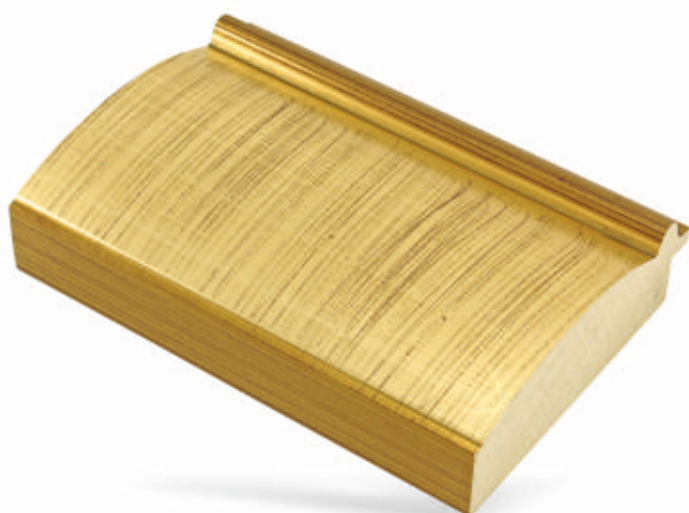
Art. 601-11 L



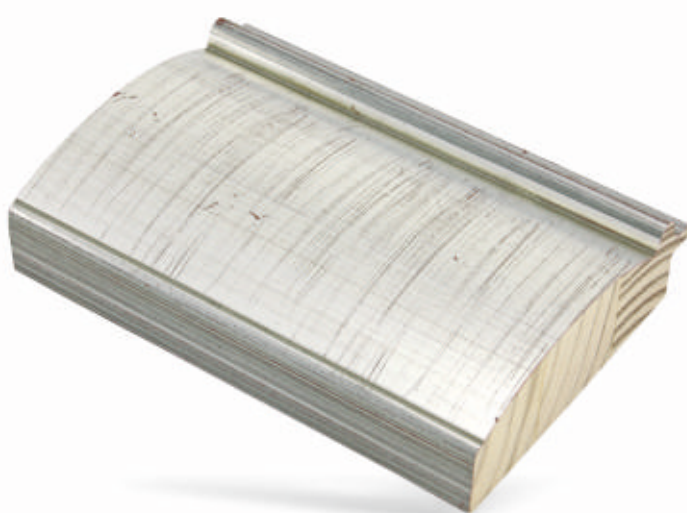
Art. 497TINA-04



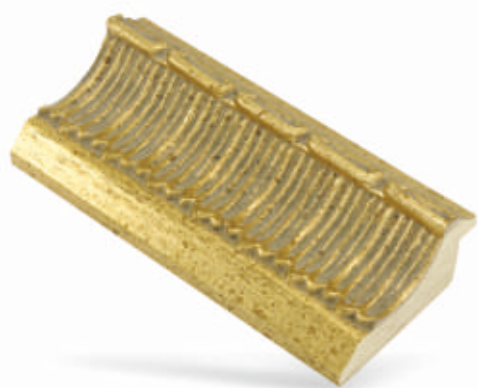
Art. 497TINA-14



Art. 95-04



Art. 95-14



Art. 2239BIS-01



Art. 2239BIS-30 L



Art. 521-30 OP



Art. 2239BIS-11



Art. 2239BIS-44 L



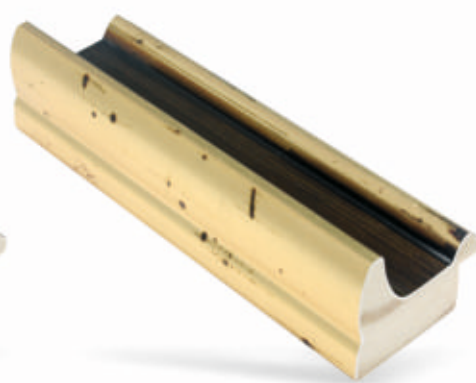
Art. 521-44 OP



Art. 521-011



Art. 521-111



Art. 521-006



Art. 888-080



Art. 888-180



Art. 888-30 OP



Art. 888-44 OP



Art. 117R-201



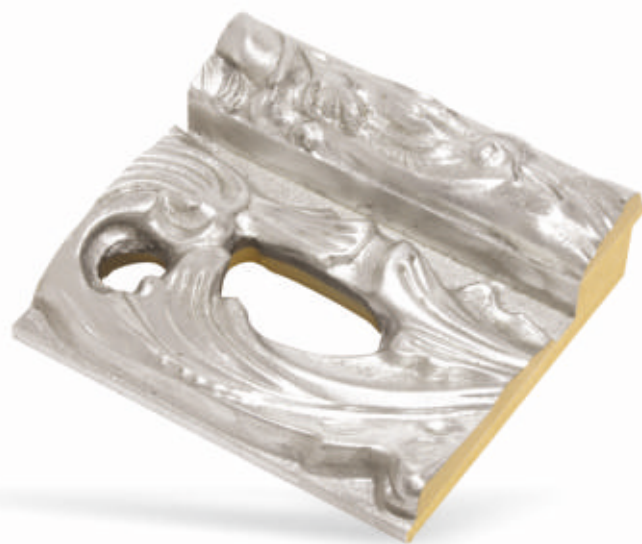
Art. 117R-211



Art. 117R-230



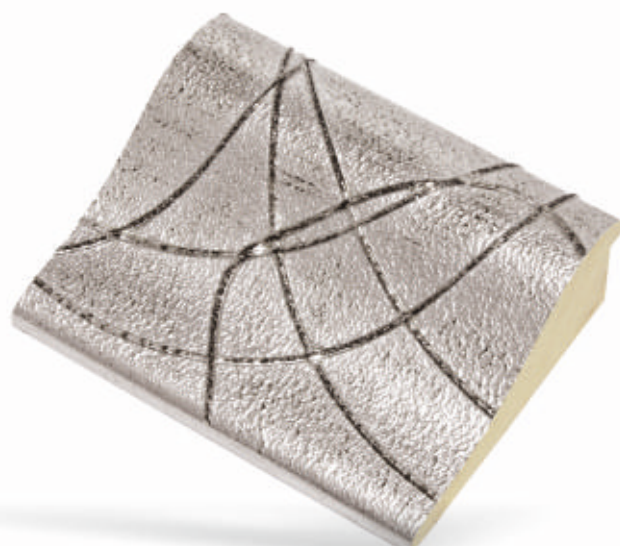
Art. 316TR-01L



Art. 316TR-11L



Art. 010-01BR



Art. 010-11BR



Art. 3023-30.11



Art. 980-30.11L



Art. 613-11CRT



Art. 613M-30.11L



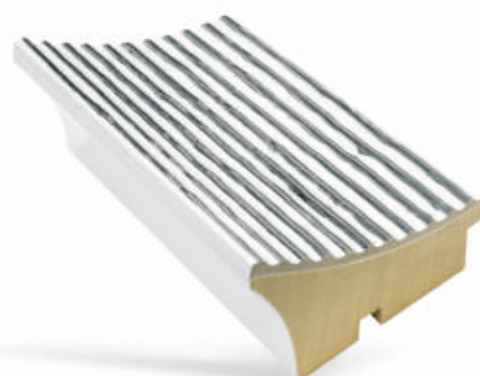
Art. 613M-30.01 L



Art. 614-30.11L



Art. 614-30.01L



Art. 613FILI-30.11L



Art. 312-01L



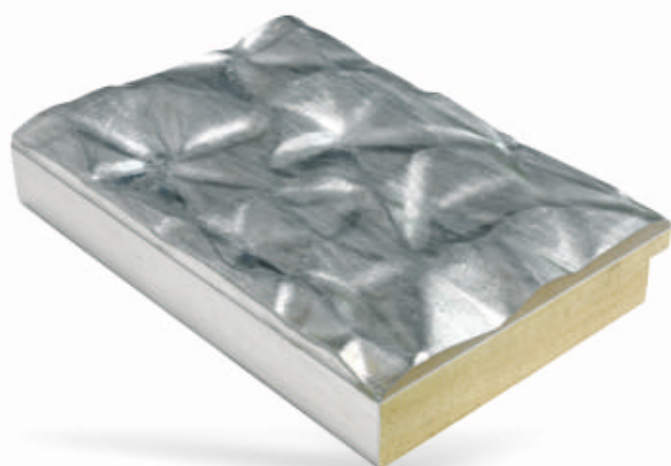
Art. 312-11L



Art. 312-30PV



Art. 135-01



Art. 135-11L



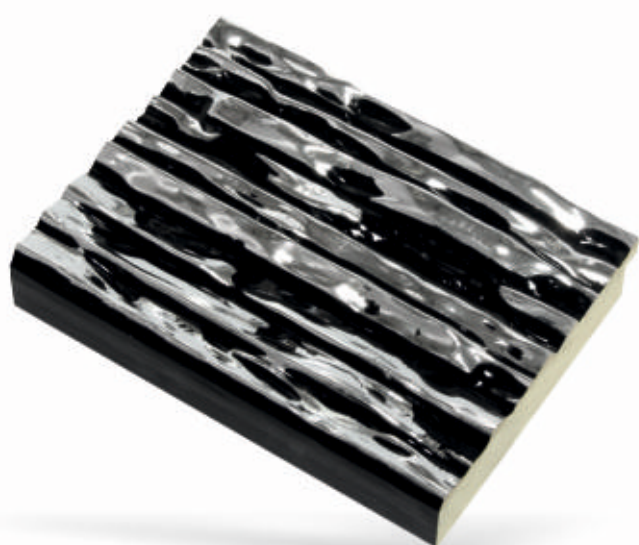
Art. 135-30L



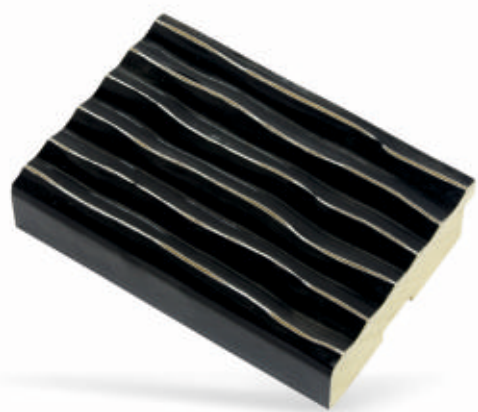
Art. 135-44L



Art. 339-30.11L



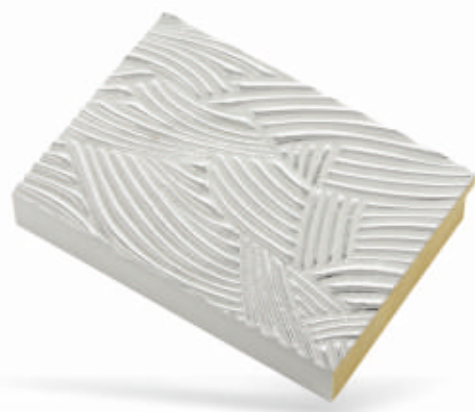
Art. 339-44.11L



Art. 161-44SF



Art. 161-30L



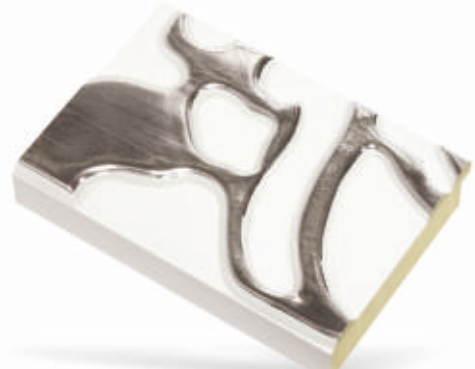
Art. 122-30.11L



Art. 1119-212



Art. 1119-30PV



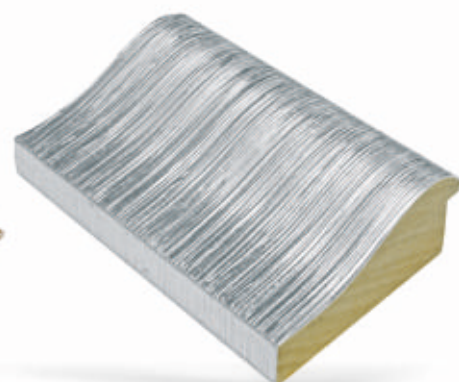
Art. 121-30.11



Art. 313-11 L



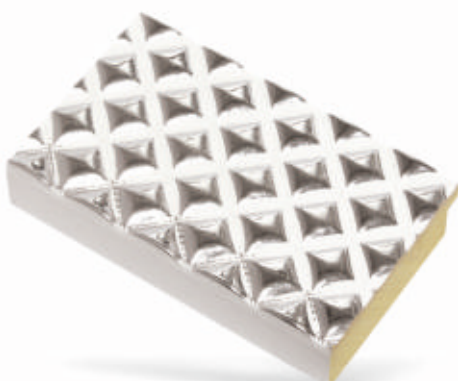
Art. 02-01PET



Art. 02-11PET



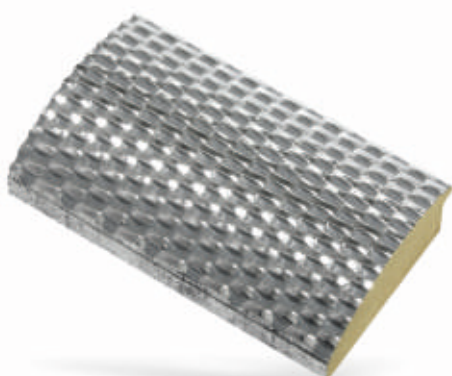
Art. 366-PERL



Art. 338-30.11L



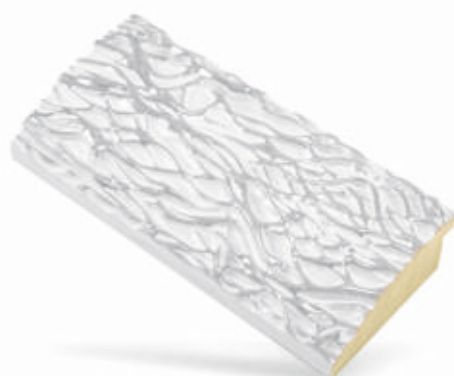
Art. 202-30.01 L



Art. 366-31L



Art. 338-PERL



Art. 202-30.11 L



Art. 126RIC-30.01L



Art. 126RIC-30.11L



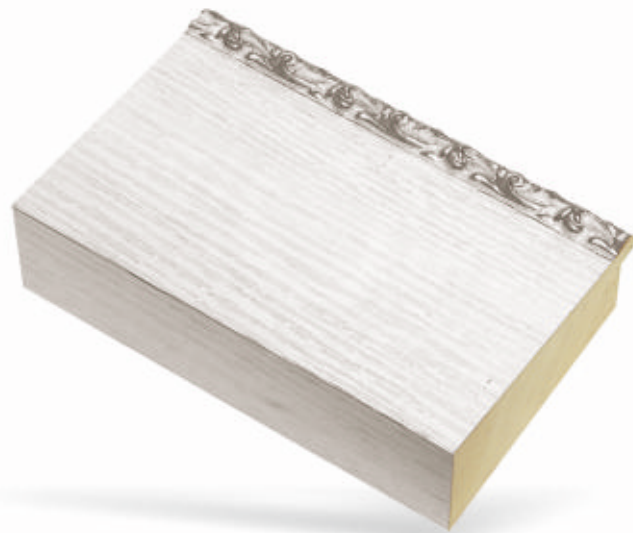
Art. 126GH-30.01L



Art. 126GH-30.11L



Art. 119-30.01



Art. 119-30.11



Art. 336-01BR



Art. 336-11BR



Art. 203-30.01 L



Art. 203-30.11 L



Art. 3550-211



Art. 3550-30 OP



Art. 127-26



Art. 127-26.11 + SILVER



Art. 127-27



Art. 336-26



Art. 336-26.11+ SILVER



Art. 336-27



Art. 331-26



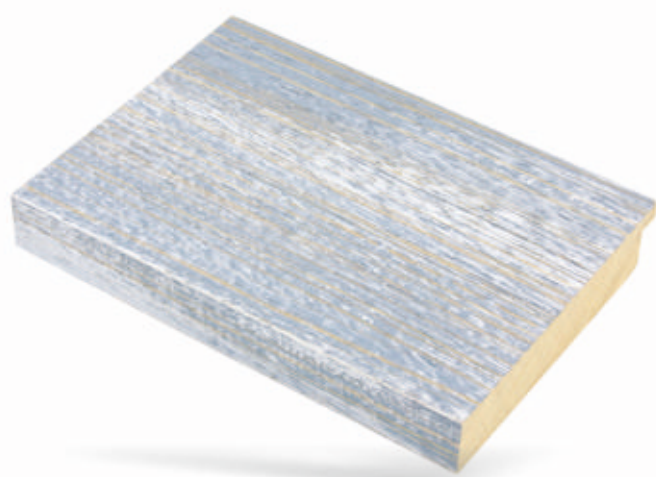
Art. 331-26.11+ SILVER



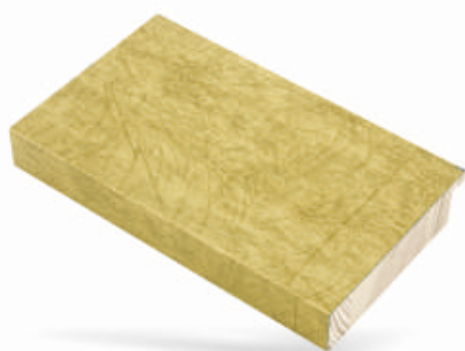
Art. 331-27



Art. 127-39



Art. 127-40



Art. 126-201



Art. 126-211



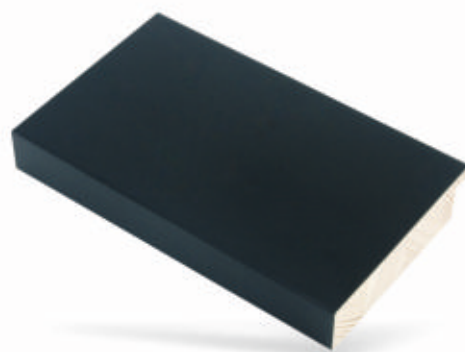
Art. 126-230



Art. 126-206



Art. 126-30 OP



Art. 126-44 OP



Art. 2136/EP-201



Art. 2136/EP-211



Art. 2136/EP-100



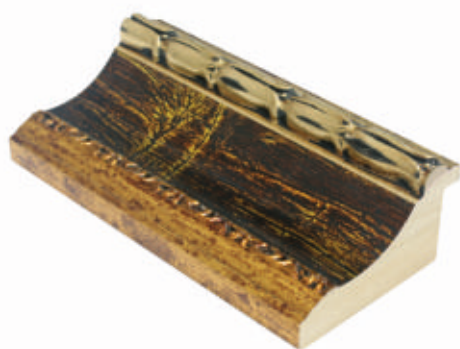
Art. 2136/EP-230



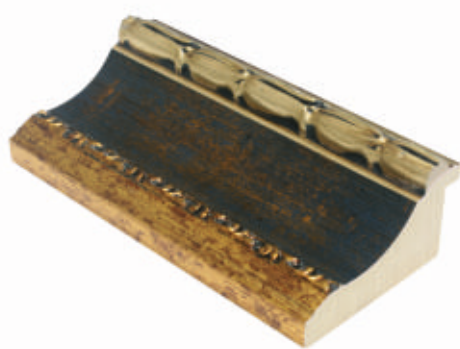
Art. 2136/EP-250



Art. 2136/EP-240



Art. 2136/EP-206



Art. 2136/EP-270



Art. 187-201



Art. 187-211



Art. 187-240



Art. 187-100



Art. 187-250



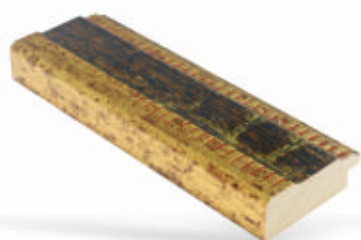
Art. 187-206



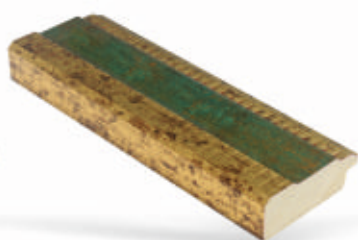
Art. 187-230



Art. 187-270



Art. 520-206



Art. 520-240



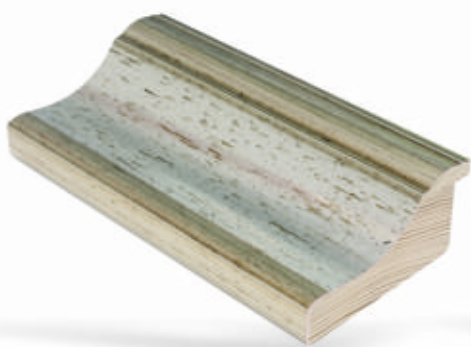
Art. 520-201



Art. 520-250



Art. 2136/E-21



Art. 2136/E-31



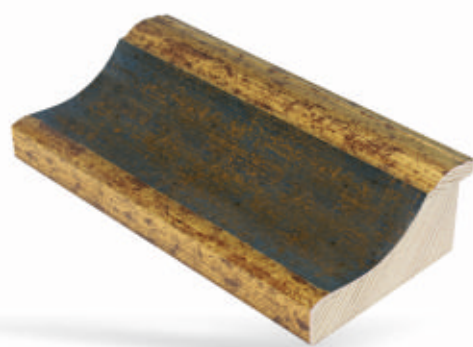
Art. 2136/E-201



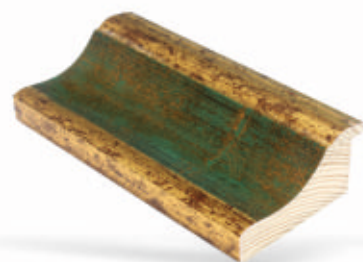
Art. 2136/E-206



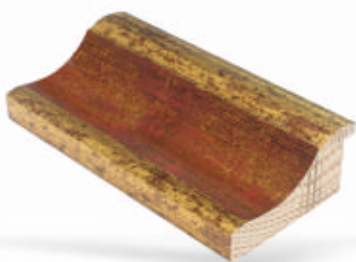
Art. 2136/E-230



Art. 2136/E-270



Art. 2136/E-240



Art. 2136/E-250



Art. 170-21



Art. 170-31



Art. R3-21



Art. R3-31



Art. R3-100



Art. R3-201



Art. R3-211



Art. R3-270



Art. R3-250



Art. R3-240



Art. R3-206



Art. 188-201



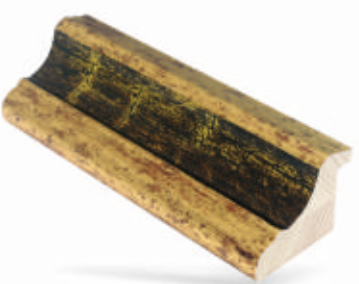
Art. 188-270



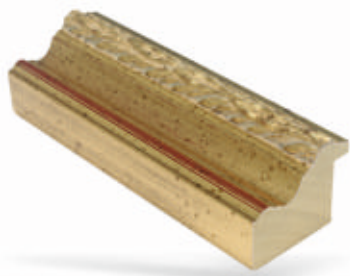
Art. 188-250



Art. 188-240



Art. 188-206



Art. R3P-011



Art. 186-000



Art. 186-006



Art. 700-01



Art. F50-01



Art. F50-11



Art. F50-30PV



Art. 136BIS-04



Art. 475-01



Art. 477-01



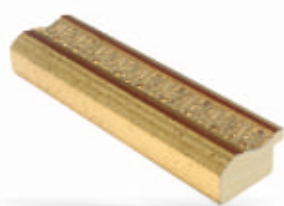
Art. 477-11



Art. 342-01



Art. 342-11



Art. 7005BIS-04



Art. 7005-03



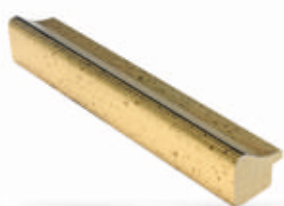
Art. 7005-13



Art. 149-01



Art. 700R-01



Art. 383-03



Art. 383-13



Art. 388BIS-01



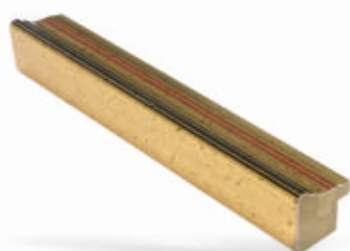
Art. 388BIS-04



Art. 340-01



Art. 91-03



Art. 382-03



Art. 170/R-055



Art. 170/R-056



Art. 705PR-30.80

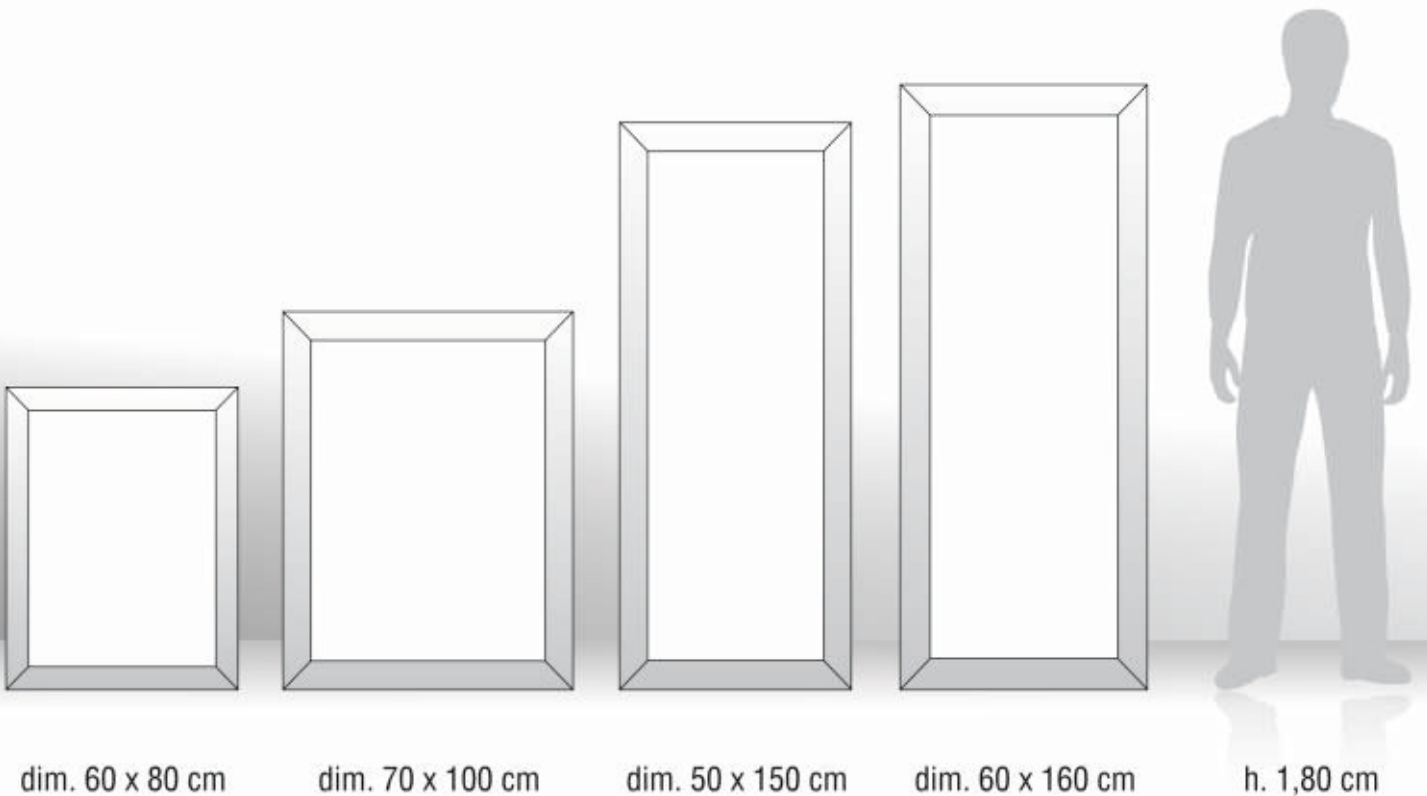


Art. 704PR-30.80



Art. 703PR-30.80

Misure disponibili | Sizes available



Inoltre è bene sapere che siamo specializzati in produzione di cornici confezionate e profili su richiesta.
Assemblamo specchiere e possiamo fornirvi qualsiasi misura vogliate



We would like to inform you we are also specialized in ready-made frames and profile on demand.
We assembly mirror frames and we can provide any sixe you should need.



MUSCERINO CORNICI

Produzione aste per cornici e specchiere

Muscerino Cornici S.r.l.

Via Dante Alighieri, 42/44
80013 Tavernanova - Casalnuovo (NA) - ITALY

Tel./Fax +39 081 8421982

www.muscerinocornici.com
info@muscerinocornici.com